

Jacket Road 12

12.50 Acres

McDonald County, MO

\$225,000



HAYDEN  OUTDOORS.

Jacket Road 12

TOTAL ACRES:

12.50

PRICE:

\$225,000

COUNTY:

McDonald County

CLOSEST TOWN:

Pea Ridge, MO

Activities & Amenities:

Pond/Lake
Stream/River

Land Details:

Address: 0000 Jacket Road,
Seligman, Missouri 65745, USA
Closest Town: Pea Ridge
Total Acres: 12.50
Deeded Acres: 12.50
Zoning: Ag
Elevation: 1200
Source of lot size: Survey

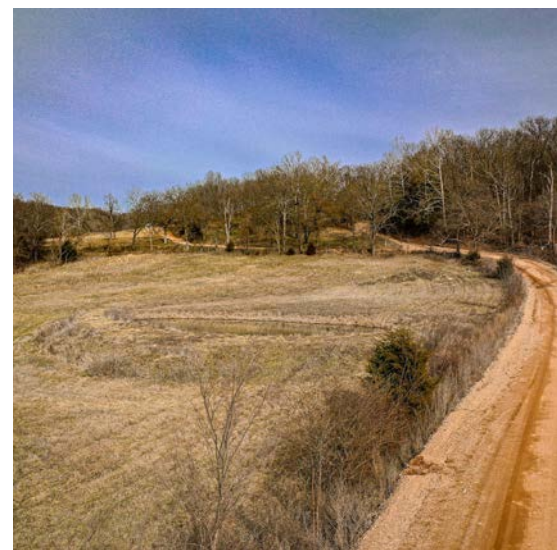
About This Property

Discover the perfect blend of open space, water features, and prime location with Jacket Road 12—a 12.5-acre surveyed property offering a mix of pastureland and wooded creek frontage. Nestled in McDonald County, Missouri, just 5 miles north of Pea Ridge, Arkansas, this versatile land presents an exceptional opportunity for those seeking a private retreat, a future homesite, or a recreational getaway.

Land

Jacket Road 12 offers a beautiful setting. The property includes a serene creek and two ponds, providing a peaceful environment that attracts wildlife and offers potential for livestock. The landscape is scenic and versatile with a combination of open pasture and a wooded creek. Potential build sites allow for the creation of a custom home, each offering its own unique view of the surrounding land. Additionally, the property boasts county road frontage along Jacket Road, ensuring easy year-round access.

Jacket Road 12 is situated in Southwest Missouri, offering convenient access to various outdoor activities and amenities. Located just 20 minutes from Bentonville, Rogers, and Northwest Arkansas, this property is also within a 30-minute drive of Beaver Lake, a premier destination for fishing, boating, and watersports. Outdoor enthusiasts will appreciate the proximity to over 150 miles of world-class mountain biking trails. Within a 30-mile radius, you'll also find incredible attractions such as the Crystal Bridges Museum of American Art,





The Scott Family Amazeum, and the J.B. and Johnelle Hunt Family Ozark Highlands Nature Center. The property is also within easy reach of major cities like Branson, Springfield, and Joplin, Missouri, making it a prime location for both recreation and everyday conveniences.

Property Highlights include:

- Creek & Two Ponds – Ideal for wildlife, livestock, or simply enjoying the serene setting.
- Open Pasture & Wooded Creek – A perfect mix of cleared land and natural beauty.
- Multiple Build Sites – Choose from several scenic spots to construct your dream home.
- County Road Frontage – Easy year-round access from Jacket Road.

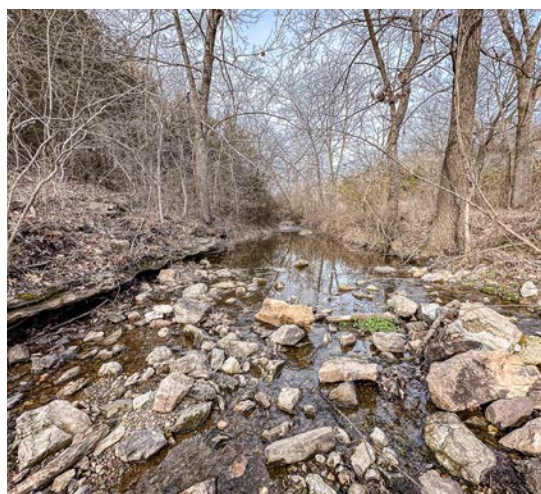
Location and Nearby Attractions:

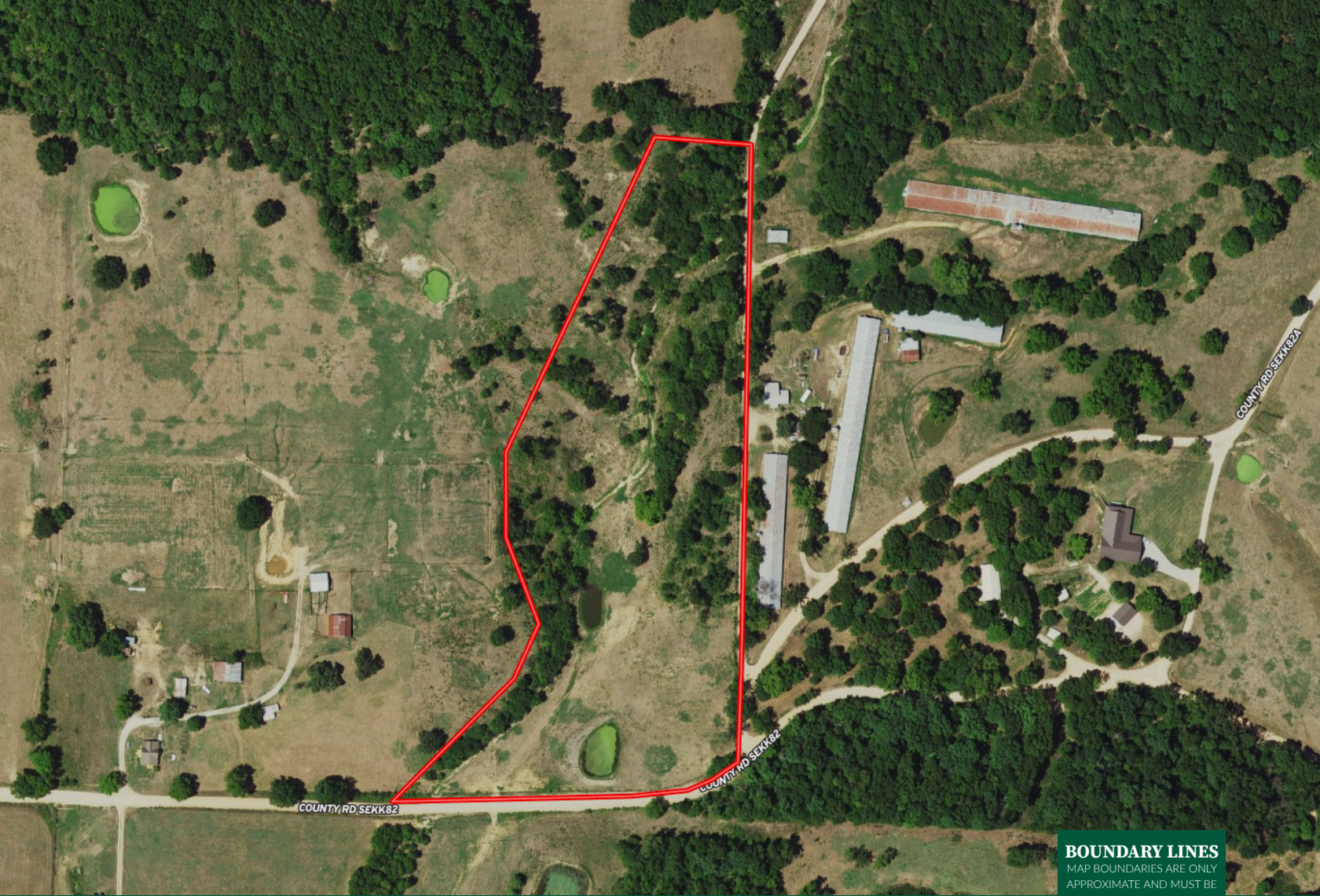
- 20 minutes to Bentonville, Rogers, and Northwest Arkansas.
- 30 minutes to Beaver Lake—perfect for fishing, boating, and watersports.
- 150+ miles of Mountain Biking Trails in close proximity.
- 30-mile radius of world-class amenities, including:
- Crystal Bridges Museum of American Art
- The Scott Family Amazeum
- J.B. and Johnelle Hunt Family Ozark Highlands Nature Center.
- Convenient to Branson, Springfield, and Joplin, Missouri.

Whether you're looking for a private homestead, a weekend escape, or an investment in the fast-growing Ozarks region, Jacket Road 12 offers limitless potential.

Contact us today to explore this rare opportunity!

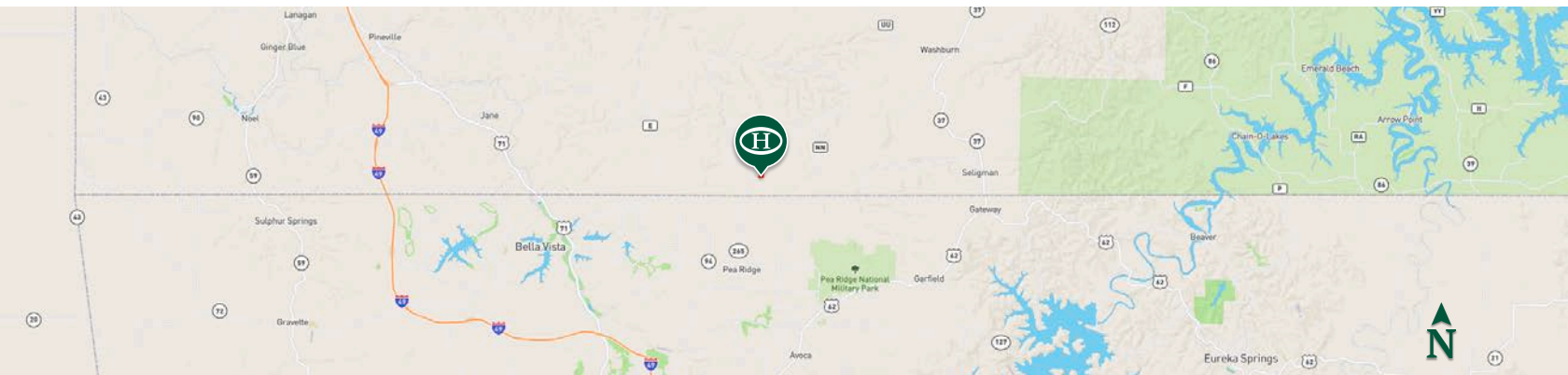
*All information provided is deemed reliable but is not guaranteed and should be independently verified. Hayden Outdoors and its affiliates makes no representation or warranties as to the accuracy, reliability, or completeness of the information, text, property boundaries, graphics links or other items contained in any website, print, or otherwise linked to or from this website. The sale offering is made subject to errors, omissions, change of price, prior sale or withdrawal without notice.





 Boundary

BOUNDARY LINES
MAP BOUNDARIES ARE ONLY
APPROXIMATE AND MUST BE
VERIFIED FOR ACCURACY.



Allen Treadwell

- 📍 Salesperson Licensed in MO, KS, AR & OK
- ✉️ Allen@HaydenOutdoors.com
- 📞 479.903.4109


**HAYDEN
OUTDOORS.
REAL ESTATE**

