



Salmon Recreational Sundog Mine

106.81 Acres

Lemhi County, ID

\$340,000



HAYDEN  OUTDOORS[®]

Salmon Recreational Sundog Mine

TOTAL ACRES:

106.81

PRICE:

\$340,000

COUNTY:

Lemhi County

CLOSEST TOWN:

Salmon, ID

Activities & Amenities:

ATV/Off Road
Borders Public Lands
Hiking/Climbing
House/Cabin
Hunting - Big Game
Hunting - Predator/Varmint
Hunting - Small Game
Hunting - Turkey
Hunting - Upland Birds
Hunting - Waterfowl
Skiing/Snowmobiling/Snow Sports
Wooded
State Hunting Unit: 30

Land Details

Address: NKA Sundog Mines,
Salmon, Idaho 83467, USA
Closest Town: Salmon
Total Acres: 106.81
Deeded Acres: 106.81
Elevation: 9240
Estimated Taxes: \$11.44 - 2024

Property Summary

Discover an exceptional off-grid property near Salmon, Idaho, entirely surrounded by public land. 106 +/- acres near the Idaho-Montana border, close to Berry Lake accessible by a Four-Wheel drive. The Beaverhead Endurance Race runs through the property every summer. This property offers unparalleled seclusion, making it ideal for hunting or a private retreat!

Improvements

This 106+/- acre property features a 10'x12' cabin with a small wood stove, a 12'x16' cabin with a 4' front deck and an 8'x12' back deck. It also includes a 12'x18' tent platform, an 8'x8' storage shed, a 2'x6' wood-heated hot tub, an outhouse, and Bohannon creek running through the property.

Recreation

Lemhi County is home to a vast expanse of the Sawtooth National Recreation Area and the Frank Church-River of No Return Wilderness, providing an abundance of recreational opportunities. Both residents and visitors enjoy a wide range of activities such as mountaineering, hiking, camping, hunting, mountain biking, and horseback riding. The Salmon River is a hub for water activities, including swimming, jet-boating, river rafting, fishing, and kayaking. The area is rich in wildlife, with elk, deer, mountain goats, bighorn sheep, bald eagles, osprey, and chukar commonly spotted. Anglers can find plenty of fishing opportunities for steelhead, trout, and occasionally king salmon, making it a prime destination for outdoor enthusiasts.

Region & Climate

Salmon, Idaho, is situated in the Lemhi Valley, surrounded by the towering Bitterroot and Lemhi mountain ranges, and intersected by the Salmon River. The region features a mix of rugged mountains, river valleys, and high desert, creating diverse ecosystems from dense pine forests to sagebrush plains. Salmon has a semi-arid climate, with hot, dry summers often reaching the low 90s (°F) and cold, snowy winters that frequently dip below freezing. The area's seasonal transitions bring colorful autumn foliage and a burst of wildflowers in spring, while heavy snowfall in the nearby mountains supports winter recreation and sustains the river's flow throughout the year.





History

The history of property in Salmon, Idaho, is deeply tied to its natural resources and rugged landscape. Initially inhabited by the Lemhi Shoshone people, the region saw an influx of settlers following the 1860s gold rush and the Homestead Act, which spurred the establishment of small farms and mining claims. The arrival of the railroad in 1910 boosted land values and development, shifting focus from mining to agriculture and ranching. Over time, many small homesteads merged into larger ranches, while much of the surrounding land became federally managed, preserving the area's wilderness and supporting its legacy as a center for outdoor recreation and ranching.

Location

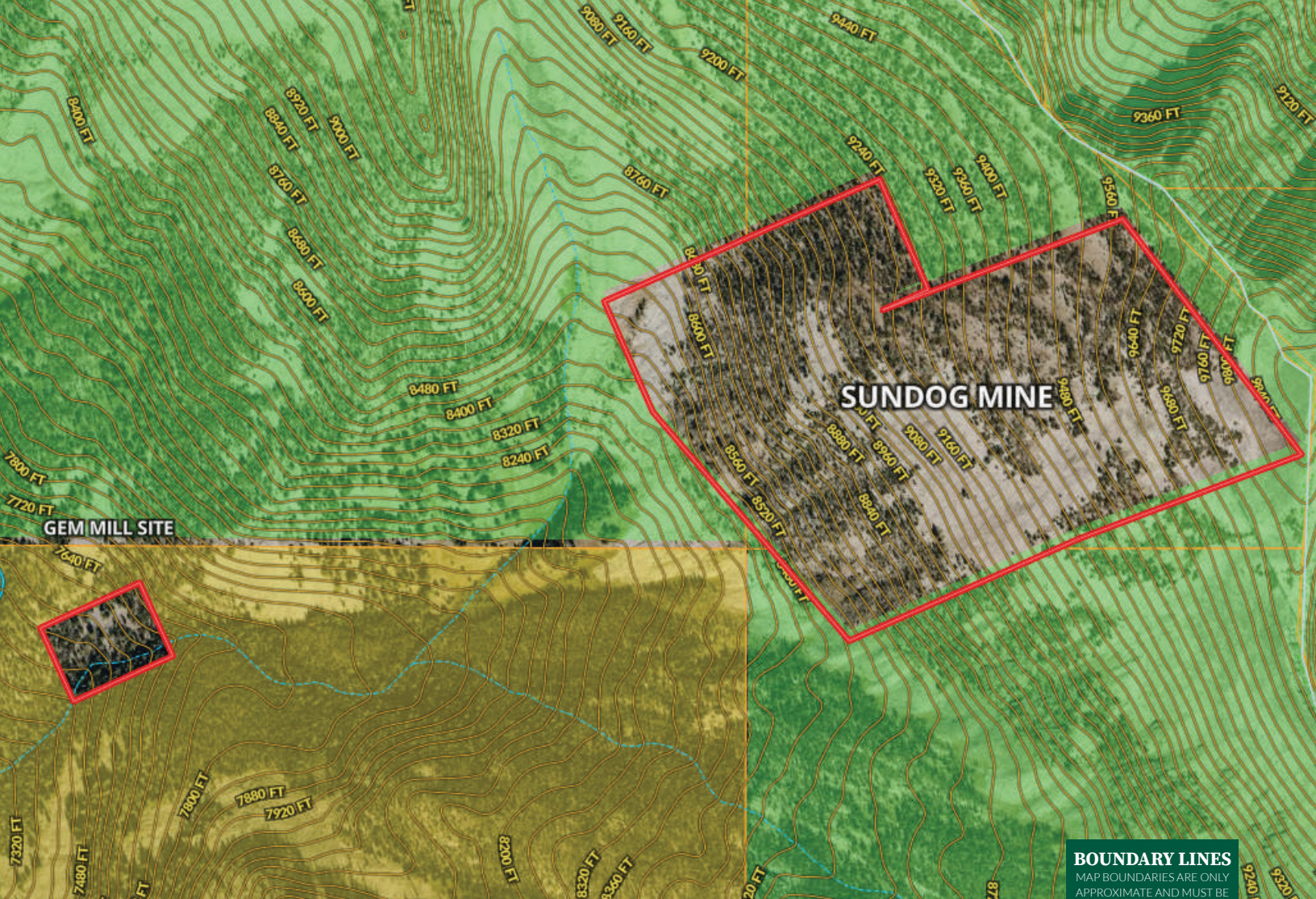
Salmon, Idaho, is a picturesque town located in the heart of the Lemhi Valley, along the banks of the Salmon River. Nestled between the Bitterroot Range to the north and the Lemhi Range to the south, it sits in a remote yet beautiful part of central Idaho. The town lies approximately 250 miles northeast of Boise and 140 miles south of Missoula, Montana, making it a popular stop for travelers exploring the mountainous regions of Idaho and Montana.

The nearest major airport is Missoula Montana Airport (MSO), about a three-hour drive north, offering flights to several major U.S. cities. Additionally, Idaho Falls Regional Airport (IDA) is roughly a two-and-a-half-hour drive southeast, providing another option for domestic flights. For smaller private aircraft, Lemhi County Airport is located just a few miles south of Salmon, catering to general aviation and charter services.

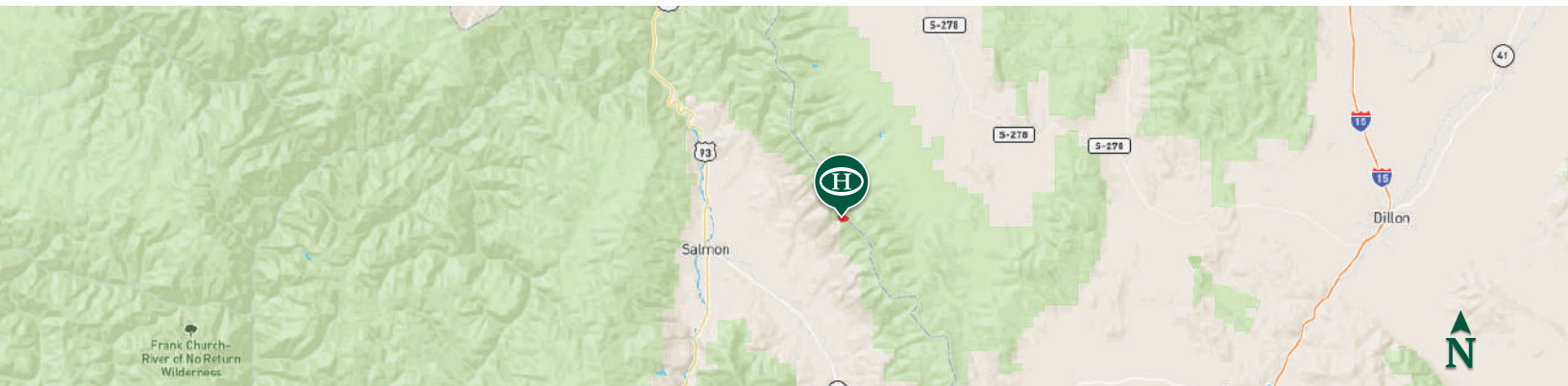
Nearby towns include Challis, located about 60 miles south, known for its historic mining district, and Darby, Montana, roughly 60 miles north, a gateway to the Bitterroot Valley. Though remote, Salmon has essential amenities such as grocery stores, a hospital (Steele Memorial Medical Center), local restaurants, art galleries, and outdoor gear shops. The town's location also provides easy access to natural attractions like hot springs, campgrounds, and trailheads leading into the Frank Church-River of No Return Wilderness, making it a convenient base for exploring the region's recreational opportunities.

*All information provided is deemed reliable but is not guaranteed and should be independently verified. Hayden Outdoors and its affiliates makes no representation or warranties as to the accuracy, reliability, or completeness of the information, text, property boundaries, graphics links or other items contained in any website, print, or otherwise linked to or from this website. The sale offering is made subject to errors, omissions, change of price, prior sale or withdrawal without notice.





Boundary BLM Forest Service



HAYDEN **H** OUTDOORS.

FARM, RANCH & RECREATIONAL REAL ESTATE



Tanner Ross

📍 Licensed in ID
 ✉ TannerRoss@HaydenOutdoors.com
 📞 208.507.0517



Barry Sims

📍 Salesperson, Licensed in ID
 ✉ BSims@HaydenOutdoors.com
 📞 208.833.5347