

702 N Chestnut St. – Beloit, KS

0.16 Acres | Mitchell County, KS | \$249,000



HAYDEN  OUTDOORS.

702 N Chestnut St. – Beloit, KS

TOTAL ACRES:

0.16

PRICE:

\$249,000

COUNTY:

Mitchell County

CLOSEST TOWN:

Beloit, KS

Land Details:

Address: 702 N Chestnut St.,
Beloit, Kansas 67420, USA

Closest Town: Beloit

Total Acres: 0.16

Deeded Acres: 0.00

Leased Acres: 0.00

Zoning: Residential

Estimated Taxes: \$4,045.4 - 2023

Source of lot size: Assessor/Tax Data

Building Details:

Homes: 1

Style of Home(s): Ranch

Basement: Partial finished

Parking Types: Attached Garage, Driveway

Total # of Spaces: 2

Outbuildings: 1

Fence Type: Chainlink/Wooden

Cooling Systems: Forced Air Cooling

Heating Systems: Forced Air

About This Property

Property Location/Address: 702 N Chestnut St., Beloit, KS

Improvements

Welcome to this beautifully updated ranch-style home in Beloit, KS, perfectly positioned in the heart of town on a spacious corner lot. With nearly 3,200 square feet of total living space as recorded by Mitchell County, this property combines modern updates with classic charm. A full remodel of the main level was completed in 2020, showcasing an open and inviting floor plan.

The main level includes two bedrooms and two bathrooms, along with an additional office space that could serve as a third bedroom. The open kitchen is designed for both functionality and style, featuring granite countertops, stainless steel appliances, ample cabinet and counter space, and elegant LVP wood plank flooring. Just off the kitchen, you'll find a spacious family room, perfect for gatherings or relaxing evenings at home. Each main-level bedroom is carpeted for added comfort. Convenience is at the forefront with a whole-house attic ventilation fan and a dedicated laundry area near the rear entrance from the oversized two-car attached garage. The washer and dryer, both just three years old, are included in the sale.





The mostly finished basement adds even more versatility to this home, offering one additional non conforming bedroom and an additional bathroom, along with a very spacious living/family room, for recreation or hobbies. There's also a bonus room that has been previously used as an ammo reloading room, but could be used for crafting or additional storage. The home's electrical breaker panel has been updated, and is also equipped with a generator outlet for added peace of mind. Key recent upgrades include a furnace and hot water heater installed in 2020, and a roof replaced in 2014. The backyard is fully enclosed with a combination of chain-link and wooden privacy fencing, and includes a small metal outbuilding, as well as a built-in two-run dog kennel.

This property combines modern amenities, ample space, and thoughtful details, making it a true gem in Beloit. Whether you're looking for a beautiful home to raise a family, or a comfortable place to come to after a long day of hunting, don't miss the chance to make this inviting, move-in-ready home your own.

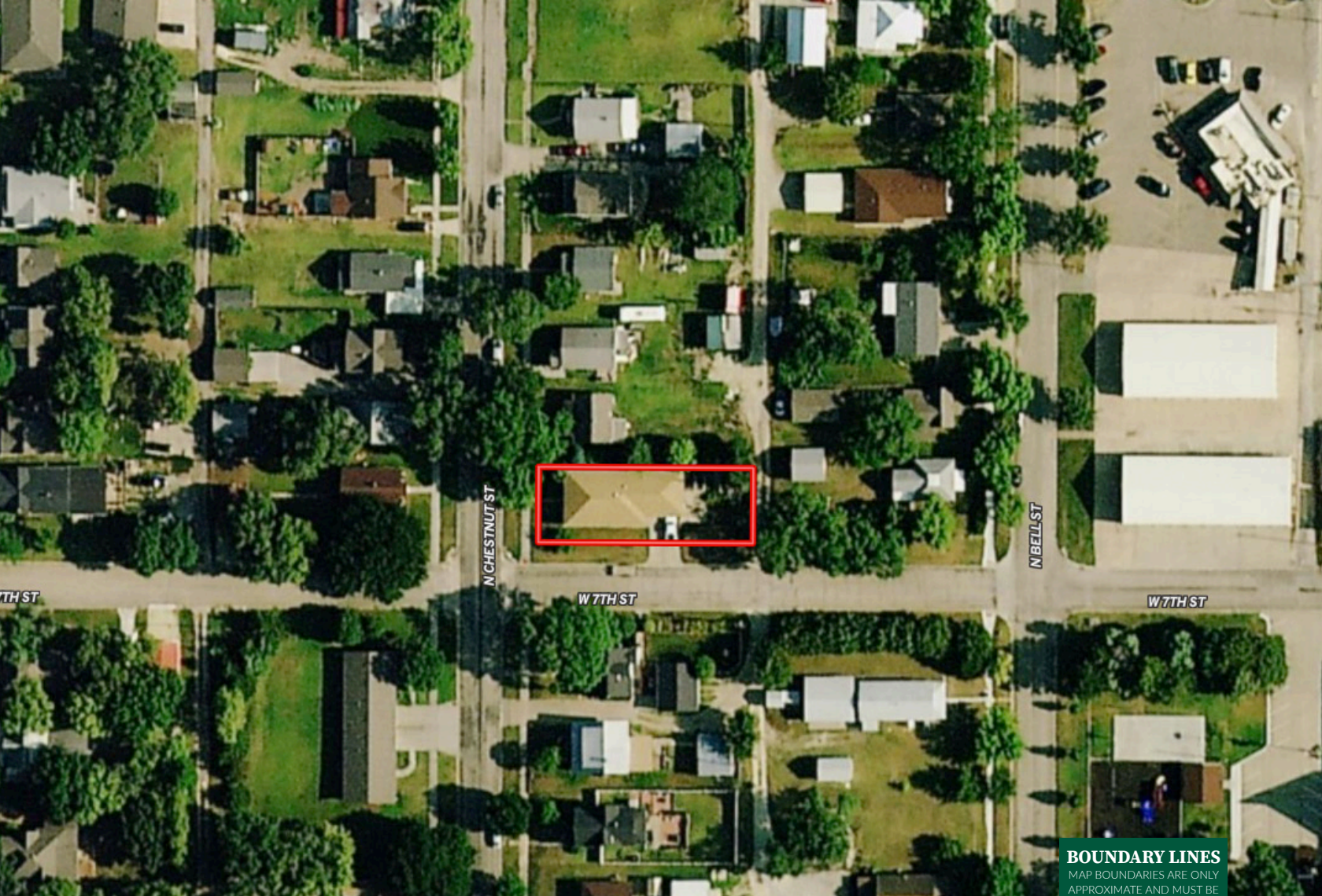
Community Attractions:

This property is only 10 miles east of Waconda Lake (Glen Elder Reservoir), a 12,500-acre body of water and one of Kansas' largest lakes. Waconda Lake is known for its great fishing, hiking/biking trails, water recreation, wildlife, and hunting opportunities. A few of the fishing species in Waconda Lake include Channel catfish, crappie, flathead catfish, striped bass, walleye, and white bass. It also offers RV hook-ups, cabins, and tenting locations for rent. Additionally, Glen Elder Wildlife Area encompasses thousands of acres of public hunting land, providing excellent waterfowl, deer, turkey, pheasant, and quail opportunities.

Beloit, KS offers many amenities to its residents and visitors including various restaurants, hotels and lodging, post office, fuel stations, municipal airport, hospital, and a K-12 school system.

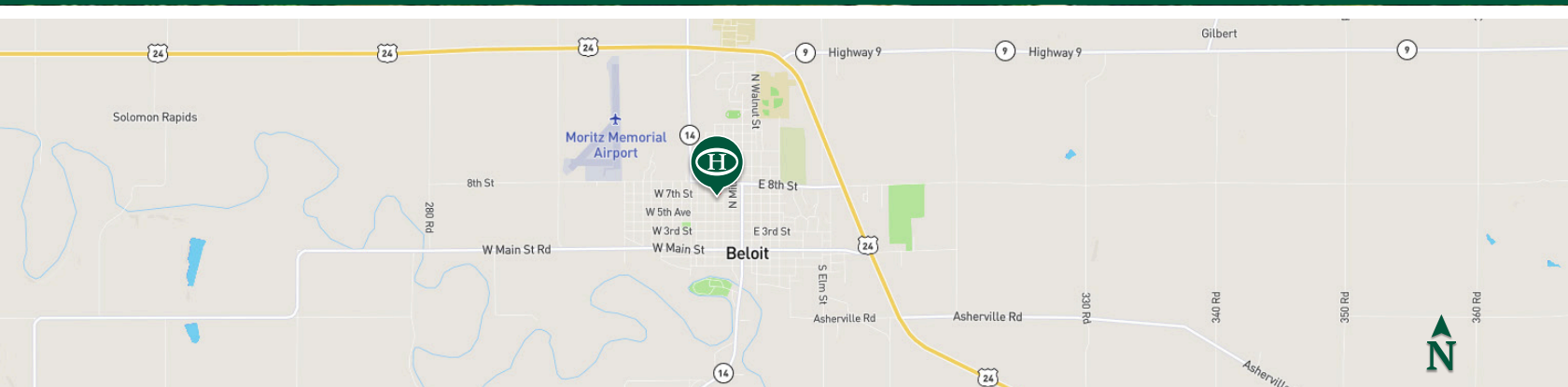
Please contact the listing agent for more information on this property or to schedule a private showing.





BOUNDARY LINES
 MAP BOUNDARIES ARE ONLY
 APPROXIMATE AND MUST BE
 VERIFIED FOR ACCURACY.

 Boundary






HAYDEN OUTDOORS.

FARM, RANCH & RECREATIONAL REAL ESTATE





Connor Williams

 Salesperson, Licensed in KS, MO, & OK
 Connor@HaydenOutdoors.com
 620.617.6300



Alex Birney

Salesperson, Licensed in KS 
 ABirney@HaydenOutdoors.com 
 620.617.8317 