

An aerial photograph of a large, green, rectangular field. The field is mostly empty, with some patches of grass and a few small trees. To the left of the field, there is a large house with a dark roof and a smaller blue building. To the right, there are several other houses and buildings, some with swimming pools. The field is bordered by a paved road on the left and right sides. The background shows more greenery and trees.

1608 Green Valley Road

3.88 Acres

Barren County, KY

\$425,000

HAYDEN  OUTDOORS

1608 Green Valley Road

TOTAL ACRES:

0.70

PRICE:

\$565,000

COUNTY:

Barren County

CLOSEST TOWN:

Ogallala, NE

Land Details:

Address: 1608 Green Valley Road,
Glasgow, Kentucky 42141, USA

Closest Town: Glasgow

Total Acres: 1.14

Zoning: Commercial

Estimated Taxes: \$662 - 2023

Source of lot size: Other

Building Details

Basement: None

Parking Types:

- Carport
- Driveway

Cooling Systems:

- Forced Air Cooling

Heating Systems:

- Forced Air

Property Summary

Discover the potential of 1608 Green Valley Road, Glasgow, KY—a former local grocery store with an additional lot, totaling 1.14 acres. Perfect for redevelopment or your next big idea, this property offers prime space in a growing area. Imagine the opportunities: retail, storage, or mixed-use. Don't miss your chance to transform this community staple! Contact us today to explore the possibilities and make it yours.

Land

This 1.14-acre property features a commercial building, once a beloved local grocery store, plus an additional lot, offering endless potential. Whether you're envisioning a new retail space, storage facility, or mixed-use development, this versatile property provides the foundation for your vision. Located in a thriving area, the possibilities are vast. Secure this investment today and bring your ideas to life!

Improvements

This property features a vacant commercial building that once housed a thriving local grocery store, serving as a staple in the community. While the building now requires some TLC, it offers a solid foundation for your vision. With its spacious layout and prime location, this property is ready to be transformed into an exciting new business venture. The possibilities are endless—bring your creativity and breathe new life into this space!





Recreation

This property offers a unique canvas for recreational possibilities. With its additional lot and open space, the site provides potential for community-focused projects such as farmers' markets, outdoor gatherings, or small recreational facilities. Its location in a growing area makes it ideal for creating a destination that blends business and leisure. Let your imagination shape this space into a hub for activity and enjoyment!

Water/Mineral Rights & Natural Resources

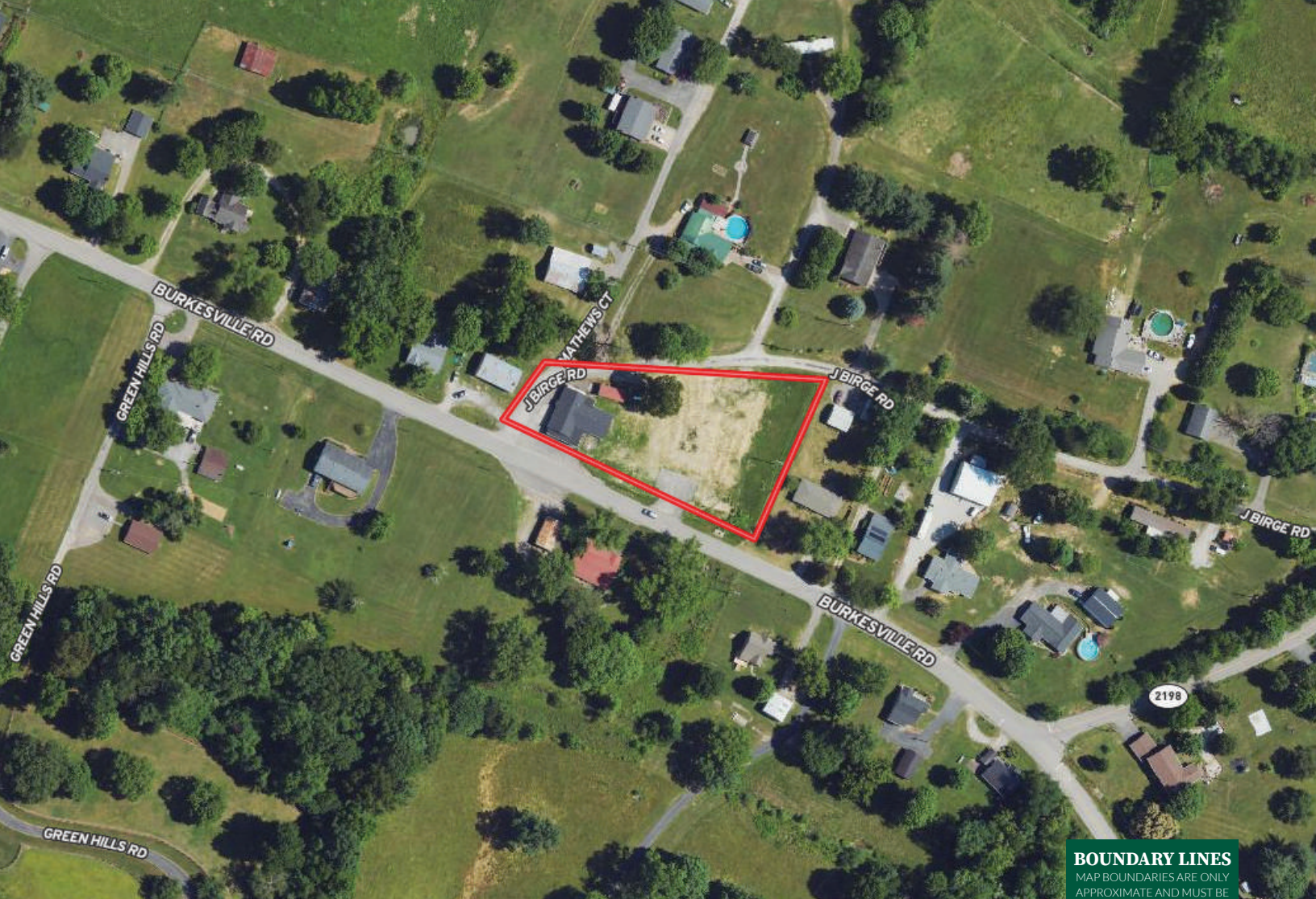
Water and mineral rights, as well as any natural resources associated with the property, are included but are to be verified by the Buyer's Agent. Buyers are encouraged to conduct their own due diligence to confirm all details and rights associated with the property.

Location

Conveniently located just minutes from the heart of Glasgow, KY, this property offers easy access to nearby amenities including shopping, dining, schools, and healthcare facilities. Positioned in a growing area, it provides a balance of accessibility and opportunity, making it an ideal spot for your next venture. Enjoy the benefits of being close to the vibrant Glasgow community while tapping into its economic potential.

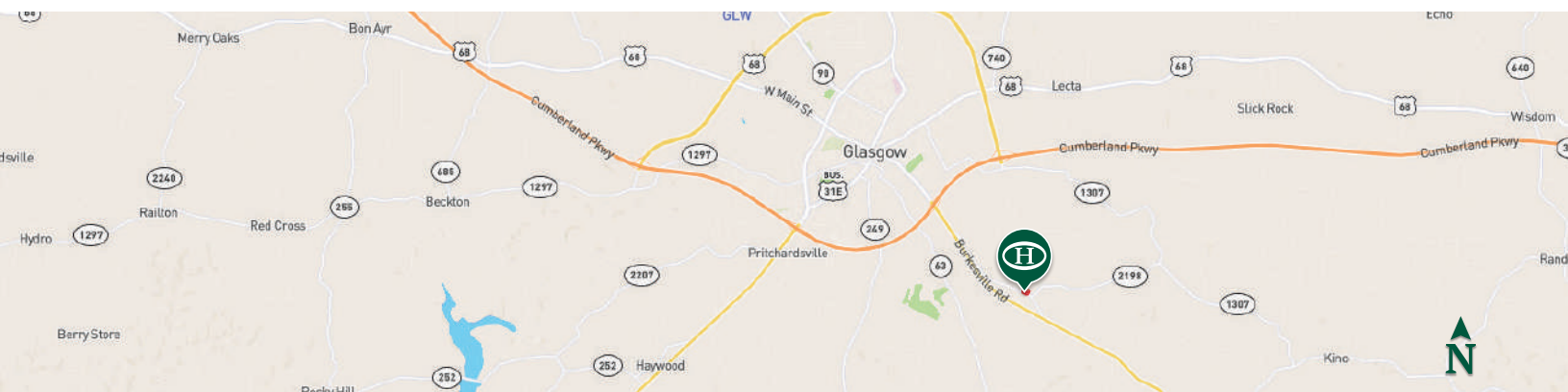
*All information provided is deemed reliable but is not guaranteed and should be independently verified. Hayden Outdoors and its affiliates makes no representation or warranties as to the accuracy, reliability, or completeness of the information, text, property boundaries, graphics links or other items contained in any website, print, or otherwise linked to or from this website. The sale offering is made subject to errors, omissions, change of price, prior sale or withdrawal without notice.








BOUNDARY LINES
MAP BOUNDARIES ARE ONLY
APPROXIMATE AND MUST BE
VERIFIED FOR ACCURACY.

 Boundary



Erica Hildreth

-  Sales Associate, Licensed in KY
-  Erica@HaydenOutdoors.com
-  270.670.7796


**HAYDEN
 OUTDOORS.[®]
 REAL ESTATE**

