

8 Fox Willow Court

3.46 Acres

Albany County, WY

\$1,099,000



HAYDEN  OUTDOORS®

Activities & Amenities

Borders Public Lands
Cycling/Mountain Biking
Hiking/Climbing
House/Cabin
Hunting - Big Game
Outbuilding/Barn/Shed/Shop
Propane
Skiing/Snowmobiling/Snow Sports

Land Details

Address: 8 Fox Willow Court,
Laramie, Wyoming 82070, USA
Closest Town: Jelm, WY
Total Acres: 3.46
Deeded Acres: 3.46
Zoning: Rural Residential
Elevation: 7,520
Topography: Mountains
Estimated Taxes: \$5,000 - 2023
Source of lot size: Assessor/Tax Data
HOA Dues: \$100

Building Details

Homes: 1
Style of Home(s): 1 1/2 Story
Finished Sq. Ft.: 2,630
Unfinished Sq. Ft.: 0
Bedrooms: 3
Full Bathrooms: 2
Half Bathrooms: 1
Basement: None
Parking Types: Attached Garage
Total # of Spaces: 2
Other Improvements: Garden Shed
Heating Systems: Fireplace & Radiant



Property Summary

This breathtaking full-log home is perched on an elevated site, offering panoramic views of the Laramie River valley and Jelm Mountain. Nestled among rolling hills, it showcases a classic log cabin design with a striking entrance and soaring glass wall framed by rich, golden timber beams. Perfect for those seeking a sanctuary surrounded by nature, this exclusive property provides direct private access to BLM and Med Bow National Forest.





Land

Set at an elevation of 7,520 feet, this 3.46-acre homesite is tucked away behind a natural privacy screen of waving willows. The surrounding grasslands are dotted with stately cottonwood trees in the river valley and thoughtfully landscaped with blue spruce, ornamental trees, and a lush bluegrass lawn. To the west, the warmth of the rising bluffs, adorned with red rock outcroppings, creates a stunning backdrop and provides a thriving habitat for local wildlife. From the fenced gardens, complete with raised beds of vibrant perennials and charming birdhouses, you can enjoy panoramic views of the natural beauty. Bordering hundreds of acres of BLM land that merge seamlessly into the Medicine Bow National Forest and Sheep Mountain, this property offers endless opportunities for hiking, wildlife viewing, and hunting.

Improvements

The 2,630 sq. ft. log home offers an inviting blend of rustic charm and modern comfort, with its captivating living room showcasing a vaulted tongue-and-groove pine ceiling and an impressive king log truss—a true marvel of craftsmanship. Anchoring the space is a cozy wood-burning fireplace, complemented by polished amber concrete floors with radiant heat, setting a quintessential western ambiance. Whether gazing at the unobstructed view of Jelm Mountain on a crisp autumn morning or watching the landscape transform under a blanket of snow, the ever-changing scenery never ceases to amaze.

The main floor master suite is bathed in natural light from a picturesque, south-facing bay window and features a spacious private bathroom, highlighted by an antique-style double sink vanity and an oversized shower with a tower faucet. The second-floor den, overlooking the living room below, offers a tranquil escape for movie nights, a good game, or a favorite western novel. Two additional upstairs bedrooms, each with charming dormer windows and unique color themes of cobalt blue and autumn brown, provide ample space and character.





Improvements

The open kitchen is ideal for entertaining, centered around a welcoming granite-topped island, surrounded by crisp white custom cabinetry, a natural gas cooktop, and a generously sized pantry. Just around the corner, the cozy dining room features panoramic mountain and valley views, making it perfect for intimate family gatherings. One of the most cherished spaces in the home is the enclosed sunroom, known as the Canoe Room, with its own wood-burning stove—a delightful spot to enjoy the tranquility of snow-blanketed winter days while opening onto the private gardens.

The attached three-car garage accommodates two large pickup trucks and offers additional space for woodworking, DIY projects, or storing a side-by-side ATV. A charming mini log shed complements the home, providing extra storage for tools, equipment, and outdoor gear.

Outside, the tiered Trex front deck, adorned with a log wood arched entrance, planter boxes, and matching benches, overlooks a meticulously maintained green lawn surrounded by granite rock retaining walls, blue spruce evergreens, shade trees, and hidden sitting areas. An automated sprinkler system ensures the landscape remains lush throughout the seasons. The breathtaking views of Jelm Mountain transform throughout the day, from soft morning hues to the dramatic glow of the last sunlight on the peak.

The backyard is a gardener's paradise, with raised beds brimming with vibrant hollyhocks, marigolds, and colorful aspen trees, making every season a celebration of color. Flagstone steps set in pea gravel, along with thoughtfully placed boulders, add interest and flow, while a traditional buck fence keeps the surrounding wildlife at bay. With spaces designed for evening grilling, birdwatching, and savoring the serene surroundings, this property is truly a private retreat that captures the essence of Western living.





Recreation

Fox Willow, nestled at the base of Jelm Mountain and just minutes from the Laramie River and the vast expanse of the Medicine Bow National Forest, is a haven for outdoor enthusiasts.

Enjoy convenient access to Lake Hattie for recreational boating, lake and fly-fishing, as well as mountain biking, hiking, and camping—all just steps from your backyard. A short drive leads to the Snowy Mountain Range, where you'll find snowmobiling trails, downhill and cross-country skiing, and endless summer ATV routes. Rugged rock formations invite climbing and exploration, adding to the property's adventure appeal.

For hunters, the area abounds with wildlife, including whitetail and mule deer, elk, moose, and antelope. Bird watchers will also delight in frequent sightings of bald eagles and hawks as they soar overhead, hunting small game in the area's diverse habitat. Fox Willow is truly a year-round retreat for those seeking both relaxation and high-adrenaline pursuits.

Region & Climate

Set at an elevation ranging from 7,200 to 8,000 feet, Fox Willow enjoys southern Wyoming's complimentary four seasons. Spring rains bring green grasses and new wildlife, sunny summer days are cooled by dark star-filled skies, crisp fall mornings and long days are ideal for fly fishing, and snow blanketed winter days are a chance to snowshoe or catch up on a favorite book. The property is conveniently located to catch a Wyoming Cowboy fall football game, the Laramie Jubilee Days rodeo, or a quick trip to the Snowy Range Ski area and snowmobiling in the Medicine Bow Mountains.

Location

Fox Willow is minutes from Woods Landing – Jelm and 27 miles west of Laramie, home of the University of Wyoming, and an hour and a half to Cheyenne or Fort Collins, Colorado. The Medicine Bow Mountains and Snowy Range Ski area is less than a half hour to the west. Denver International Airport (DEN) is two hours to the south.

*All information provided is deemed reliable but is not guaranteed and should be independently verified. Hayden Outdoors and its affiliates makes no representation or warranties as to the accuracy, reliability, or completeness of the information, text, property boundaries, graphics links or other items contained in any website, print, or otherwise linked to or from this website. The sale offering is made subject to errors, omissions, change of price, prior sale or withdrawal without notice.



Hayden Outdoors

Buyer Process

BUYER QUALIFICATION: Each potential purchaser will be evaluated with respect to very specific submission requirements. Confidentiality will be held in the highest regard. Sellers will be made aware of each potential purchaser's ability to perform, should that become their goal.

PROPERTY SHOWINGS: With regard to scheduling showings on your property, Hayden Outdoors understands and respects your livelihood and personal items. The property will be presented to potential purchasers by a Hayden Outdoors representative by appointment only, unless arranged otherwise.

REPRESENTATION OF OFFERS: Hayden Outdoors will advise and support sellers in the presentation and representation of offers. Hayden Outdoors will supply active and current marketing materials when dealing with each potential offer. Offers must be presented in a timely manner, and Hayden Outdoors brokers will travel to present the offers, and in special cases, Hayden Outdoors may execute a webinar for presentation.

BROKER PARTICIPATION: Hayden Outdoors welcomes outside brokers to bring buyers to purchase our properties. We offer cooperating commission rates to participating brokers. All properties marketed with Hayden Outdoors are exclusively promoted and listed through the real estate process.

EQUAL HOUSING: Hayden Outdoors is proud to be an Equal Housing Opportunity Brokerage. All real estate advertised is subject to the Federal Housing Act, which makes it illegal to advertise "any preference, limitation, or discrimination because of race, color, religion, sex, handicap, familial status, or national origin, or intention to make any such preference, limitation, or discrimination."

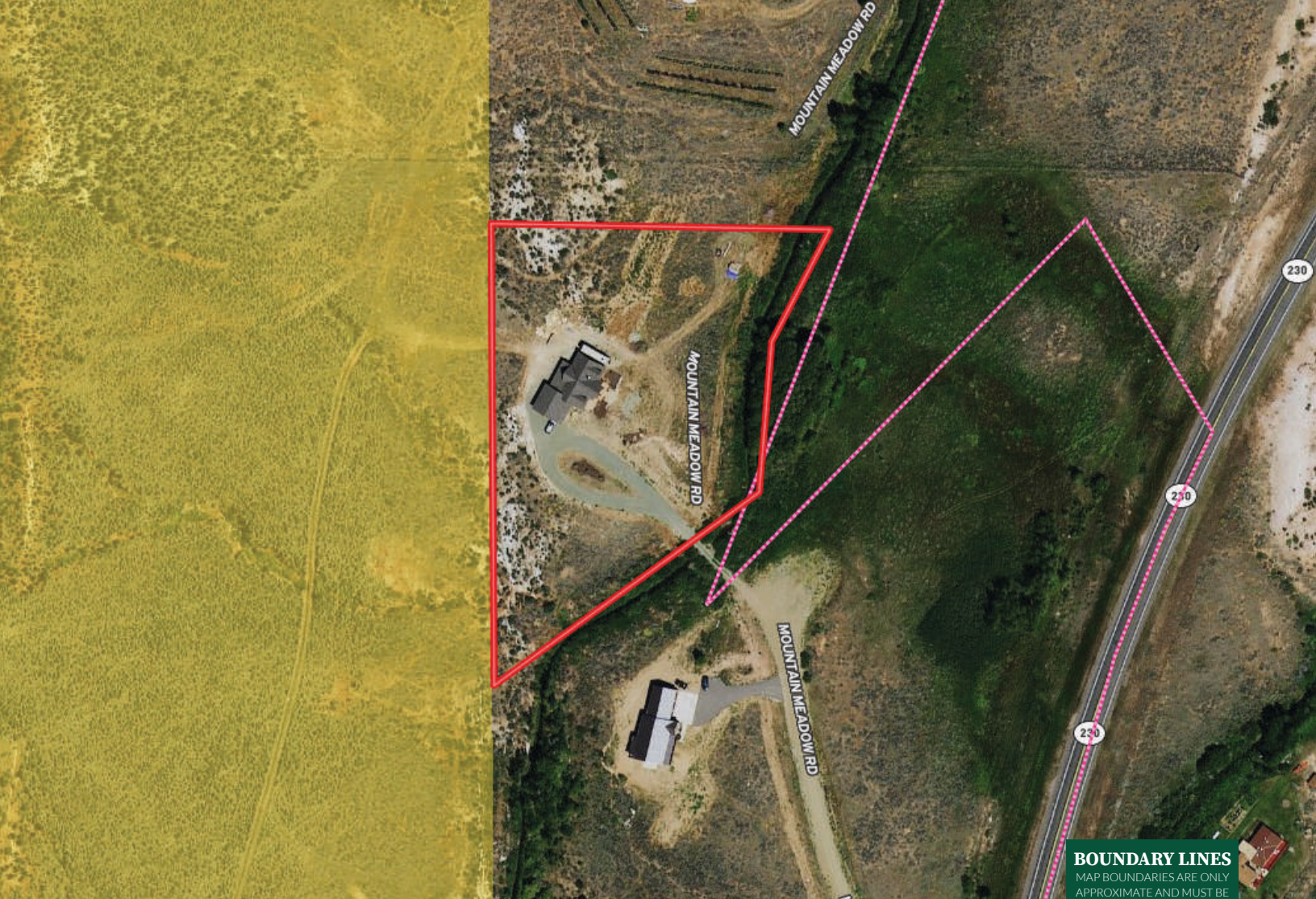


"The service you get transcends anything I've ever heard of. They literally turn your vision into reality. I mean, who else does that for you. Nobody"

- RICK STEINER, SELLER/BUYER

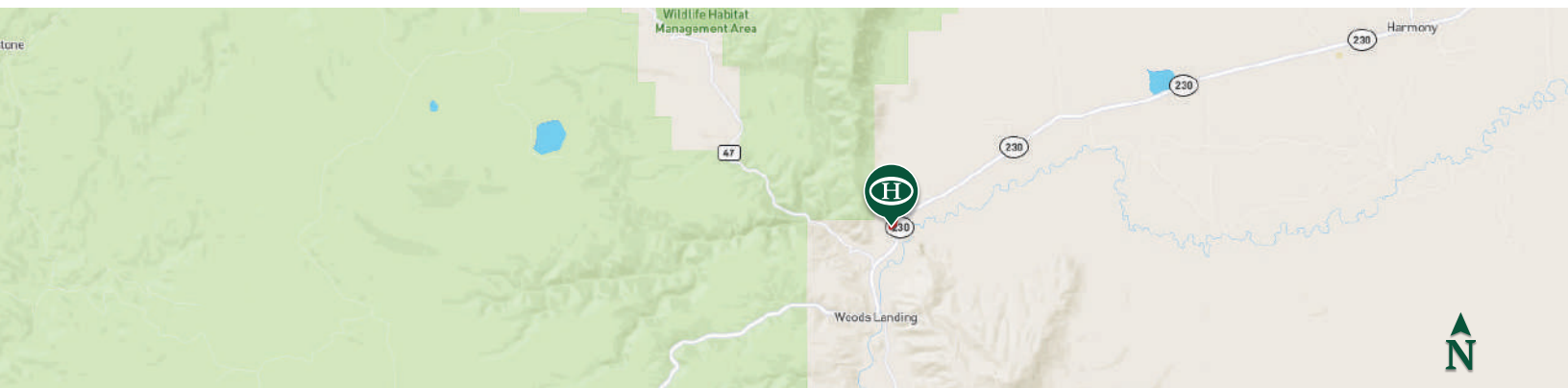
Scan to see more
testimonials





Boundary BLM

BOUNDARY LINES
MAP BOUNDARIES ARE ONLY APPROXIMATE AND MUST BE VERIFIED FOR ACCURACY.



HAYDEN **H** OUTDOORS.

FARM, RANCH & RECREATIONAL REAL ESTATE



Jaci Cole

📍 Real Estate Agent, Licensed in WY
✉ Jaci@HaydenOutdoors.com
📞 303.880.3779



James Mansfield

📍 Broker Associate, Licensed in CO & WY
✉ JamesMansfield@HaydenOutdoors.com
📞 307.761.4533