

1117 Bellows Rd

3.22 Acres

Park County, CO

\$79,900



HAYDEN  OUTDOORS[®]

1117 Bellows Rd

TOTAL ACRES:

3.22

PRICE:

\$79,900

COUNTY:

Park County

CLOSEST TOWN:

Hartsel, CO

Activities & Amenities:

ATV/Off Road
Campground
Cycling/Mountain Biking
Fishing
Hiking/Climbing
Hunting - Big Game
Hunting - Predator/Varmint
Hunting - Small Game
Pond/Lake
Propane
Wooded
State Hunting Unit: 57

Land Details

Address: 1117 Bellows Rd,
Hartsel, Colorado 80449, USA
Closest Town: Buena Vista
Total Acres: 3.22
Source of lot size: Assessor/Tax Data
HOA Dues: \$235

Property Summary

This 3.22 acre property features a beautiful aspen grove with good access for a driveway and many great building or camping sites. Located minutes from Highway 285 on a lightly traveled county road, the property provides easy access with optimum privacy.

Improvements

All property corners are marked and there are fence posts to mark the property boundaries around most of the land and a well maintained wood sided storage shed provides storage for your adventure gear

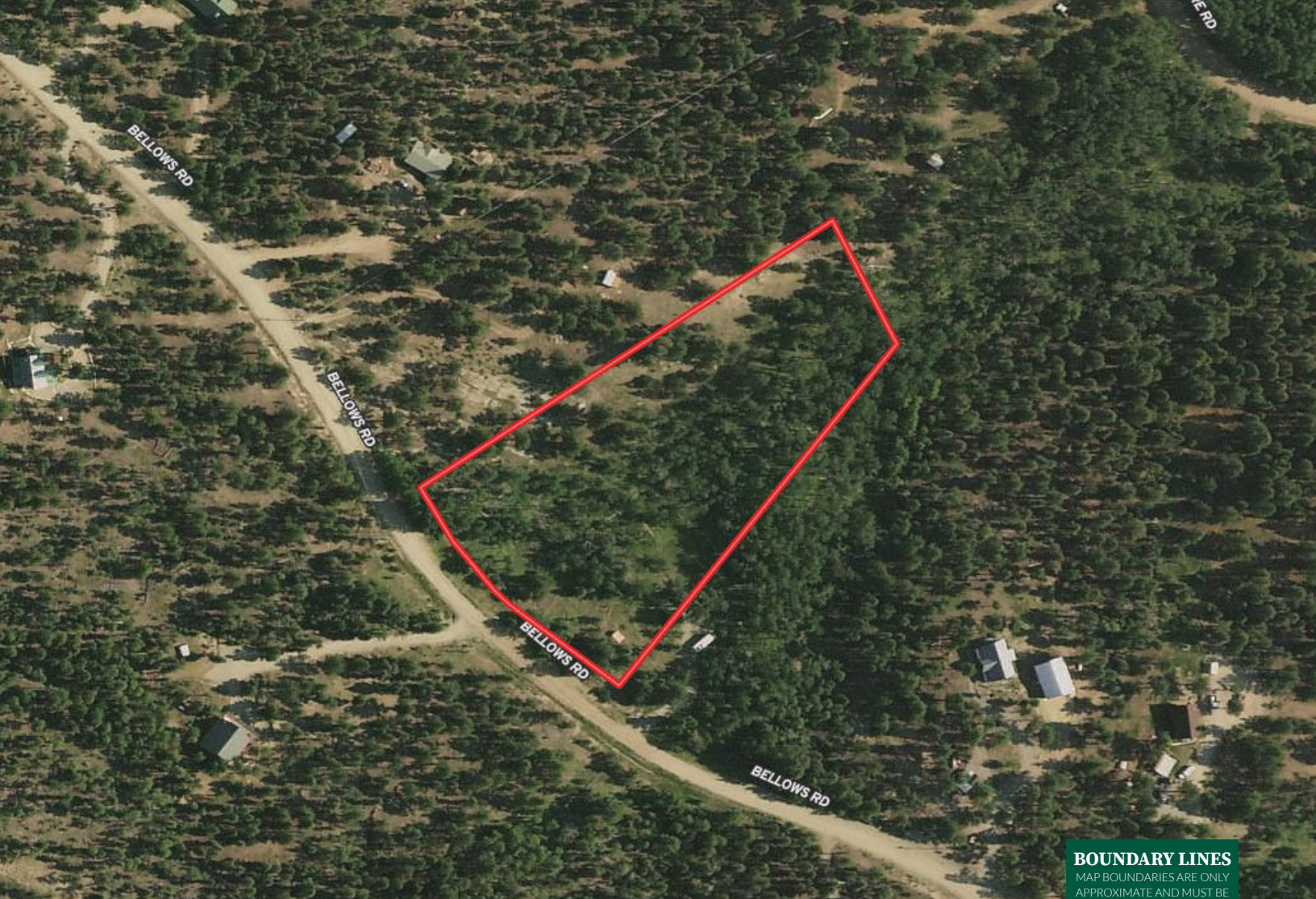
Recreation

The Ranch of the Rockies association gives access to many amenities, including hiking trails, a burn pit, and a stocked fishing pond that boasts some very nice rainbow trout. With gold water stream fishing, and multiple public reservoirs to augment your fishing needs within an hour drive. There are also miles of roads and trails in the 4-mile recreation area for 4x4 and off road adventures. The Pike and San Isabel National Forest surrounds the Ranch of the Rockies for nearly unlimited access to hiking and hunting lands and the property is about an hour from the Breckenridge Ski Resort with the Arkansas valley just over the hill for world class mountain climbing and river rafting.

*All information provided is deemed reliable but is not guaranteed and should be independently verified. Hayden Outdoors and its affiliates makes no representation or warranties as to the accuracy, reliability, or completeness of the information, text, property boundaries, graphics links or other items contained in any website, print, or otherwise linked to or from this website. The sale offering is made subject to errors, omissions, change of price, prior sale or withdrawal without notice.










BOUNDARY LINES
MAP BOUNDARIES ARE ONLY
APPROXIMATE AND MUST BE
VERIFIED FOR ACCURACY.

 Boundary



Brett Mitchell

 Broker Associate, Licensed in CO
 Brett@HaydenOutdoors.com
 719.207.2490


**HAYDEN
OUTDOORS.
REAL ESTATE**

