

Parma Country Home

12.71 Acres

Canyon County, ID

\$1,450,000



HAYDEN  OUTDOORS®

Activities & Amenities

House/Cabin
Irrigation

Land Details

Address: 29309 Parma Rd,
Parma, Idaho 83660, USA

Closest Town: Parma

Total Acres: 12.71

Deeded Acres: 12.71

Elevation: 2,300

Topography: Level

Water Rights: Yes

Estimated Taxes: \$4,632.78 - 2023

Building Details

Homes: 1

Style of Home(s): Single w/
Upstairs Bonus Room

Finished Sq. Ft.: 3,580

Bedrooms: 3

Full Bathrooms: 3

Basement: None

Parking Types: Attached Garage

Total # of Spaces: 3

Cooling Systems: Forced Air Cooling

Heating Systems: Forced Air



Property Summary

This beautiful 12-acre estate, located just outside Parma, Idaho, features a 3,580 sqft home, 8 acres of irrigated pasture and scenic views of the Owyhee Mountains.





Land

Located just outside Parma, Idaho, this stunning 12-acre estate offers over 8 acres of irrigated pasture, perfect for livestock or farming. The property comes with 8 water shares, ensuring reliable irrigation. The home is set amidst large, mature trees, while offering picturesque views of the surrounding countryside and the Owyhee Mountains.

Improvements

This beautiful home spans over 3,500 square feet and offers 3 bedrooms and 3 bathrooms. The large kitchen is a chef's dream, featuring new quartz countertops, a built-in Thermador oven and gas range, and an additional built-in wall oven. Each bedroom boasts a walk-in closet, with a convenient Jack and Jill bathroom between two of the rooms. The home features large windows throughout, offering stunning views and tons of natural light. The home also includes two water heaters, a dedicated pool bathroom, and a heated pool for year-round enjoyment. Additional highlights include a heated garage, a large covered patio with ceiling fans, and plenty of space for entertaining both indoors and out.



Recreation

Parma residents enjoy their close proximity to several recreational opportunities, particularly fishing. Some of the local hotspots to recreate include the Snake River, the Boise River, and the Fort Boise Wildlife Management Area.

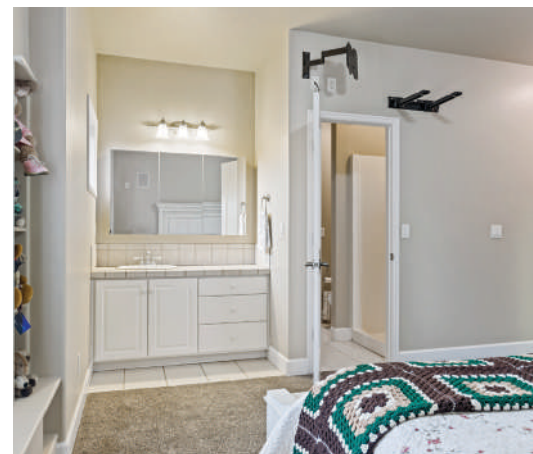
- Parma Ridge Winery
- Boise River
- Roswell Marsh Wildlife Habitat Area
- Parma Motor-Vu Drive-In
- Snake River
- Fort Boise Wildlife Management Area
- Jump Creek Falls
- Lake Lowell

Location

Located less than a mile from the growing agricultural community of Parma, Idaho, this property is surrounded by views of the Owyhee Mountains and is located just over 7 miles from the east banks of the Snake River, providing an abundance of recreational opportunities available at your fingertips, including fishing, boating, camping, hiking, ATV, snowmobile riding, and hunting.

Parma offers a small-town feel with the convenience of being just 15 minutes from Interstate 84 and less than an hour drive from Nampa, Idaho, making it convenient to access medical, shopping, restaurants, and more.

Residents of Parma enjoy five city parks, the Parma Motor-Vu drive-in theatre, one of the few open-air drive-in theaters still operating in Idaho, in addition to local events such as the Old Fort Boise Days held annually in June. Another annual summer event is the renowned annual sharpshooting contest hosted by the Parma Rod and Gun Club in which sharpshooters from around the country participate.



*All information provided is deemed reliable but is not guaranteed and should be independently verified. Hayden Outdoors and its affiliates makes no representation or warranties as to the accuracy, reliability, or completeness of the information, text, property boundaries, graphics links or other items contained in any website, print, or otherwise linked to or from this website. The sale offering is made subject to errors, omissions, change of price, prior sale or withdrawal without notice.





Hayden Outdoors

Buyer Process

BUYER QUALIFICATION: Each potential purchaser will be evaluated with respect to very specific submission requirements. Confidentiality will be held in the highest regard. Sellers will be made aware of each potential purchaser’s ability to perform, should that become their goal.

PROPERTY SHOWINGS: With regards to scheduling showings on your property, Hayden Outdoors understands and respects your livelihood and personal items. The property will be presented to potential purchasers by a Hayden Outdoors representative by appointment only, unless arranged otherwise.

REPRESENTATION OF OFFERS: Hayden Outdoors will advise and support sellers in the presentation and representation of offers. Hayden Outdoors will supply active and current marketing materials when dealing with each potential offer. Offers must be presented in a timely manner, and Hayden Outdoors brokers will travel to present the offers, and in special cases, Hayden Outdoors may execute a webinar for presentation.

BROKER PARTICIPATION: Hayden Outdoors welcomes outside brokers to bring buyers to purchase our properties. We offer cooperating commission rates to participating brokers. All properties marketed with Hayden Outdoors are exclusively promoted and listed through the real estate process.

EQUAL HOUSING: Hayden Outdoors is proud to be an Equal Housing Opportunity Brokerage. All real estate advertised is subject to the Federal Housing Act, which makes it illegal to advertise “any preference, limitation, or discrimination because of race, color, religion, sex, handicap, familial status, or national origin, or intention to make any such preference, limitation, or discrimination.”



“The service you get transcends anything I’ve ever heard of. They literally turn your vision into reality. I mean, who else does that for you. Nobody”

- RICK STEINER, SELLER/BUYER

Scan to see more testimonials








 Boundary

BOUNDARY LINES
MAP BOUNDARIES ARE ONLY
APPROXIMATE AND MUST BE
VERIFIED FOR ACCURACY.



Austin Callison

-  Broker, Licensed in ID, OR, & WY
-  Austin@HaydenOutdoors.com
-  208.870.1757


**HAYDEN
 OUTDOORS.[®]
 REAL ESTATE**

