

Catron County 198

197.68 Acres

Catron County, NM

\$217,800



Catron County 198

TOTAL ACRES:

197.68

PRICE:

\$217,800

COUNTY:

Catron County, NM

CLOSEST TOWN:

Quemado, NM

Activities & Amenities:

ATV/Off Road
Borders Public Lands
Cycling/Mountain Biking
Development Potential
Farm/Crops/Ag
Food Plots
Hiking/Climbing
Hunting - Big Game
Hunting - Predator/Varmint
Hunting - Small Game
Hunting - Turkey
Off Grid Power
Outfitting/Guide Service
Solar
Wind/Energy
Wooded
State Hunting Unit: New Mexico
Game and Fish Hunting Unit: 12

Land Details:

Address: 92 Northern Rd, Quemado,
New Mexico 87829, USA
Closest Town: Quemado, NM
Total Acres: 197.68
Deeded Acres: 197.68
Leased Acres: 0.00
Zoning: ag, residential
Elevation: 7464
Topography: rolling grass land
Vegetation: Native Grasses pinion juniper
Tillable/Crop/Orchard Acres:
Pasture Acres: 197.68
Irrigated Acres: 0
Riverbottom Acres: 0
Estimated Taxes: \$813.56 - 2023
Source of lot size: Assessor/Tax Data

Property Summary

Wide open spaces, is the way to describe this vacant 197.68 +/- acre parcel, with gentle rolling terrain, dotted scattered pinon, juniper trees and plenty of native grasses. One of the last larger pieces of privately owned parcels in the area lends itself to limitless possibilities. From a private hideaway, to development, a home away from home, off grid cabin or camping spot, the property provides for seclusion away from neighbors.

Land

The property is one continuous 197.68 +/- deeded acres in a rectangular shape, rolling terrain with a long draw from the northwest corner to the south east corner. The property is covered in native grasses and dotted with pinion pine and juniper trees. The property borders BLM and State Trust Land on 3 sides and is accessible via the numerous roads that crisscross the area. Gentle rolling terrain allows for vehicles to drive the entire perimeter of the property.

Average elevation of 7464; ranging from 7300 to 7400

Improvements

Several roads suitable for vehicle or ATV traffic traverse the property.





Recreation

Located in New Mexico Game and Fish Game unit 12, is New Mexico's best kept secret for Elk Hunting. The unit sits on the northern part of the famed Gila and shares the same genetics. The unit has produced some of the same giants in the 400" class over the years. With plenty of public land BLM, US Forest and State lands in the unit, and with just a few miles from the San Francisco Mountains, The Mesita and Eagle Peak Wilderness, there is plenty of hunting opportunities within a few miles of the property.

Water/Mineral Rights & Natural Resources

No Water / Mineral Rights are included in the property

General Operations

Recreational use, Cattle grazing

Region & Climate

Mild summers and mild winters

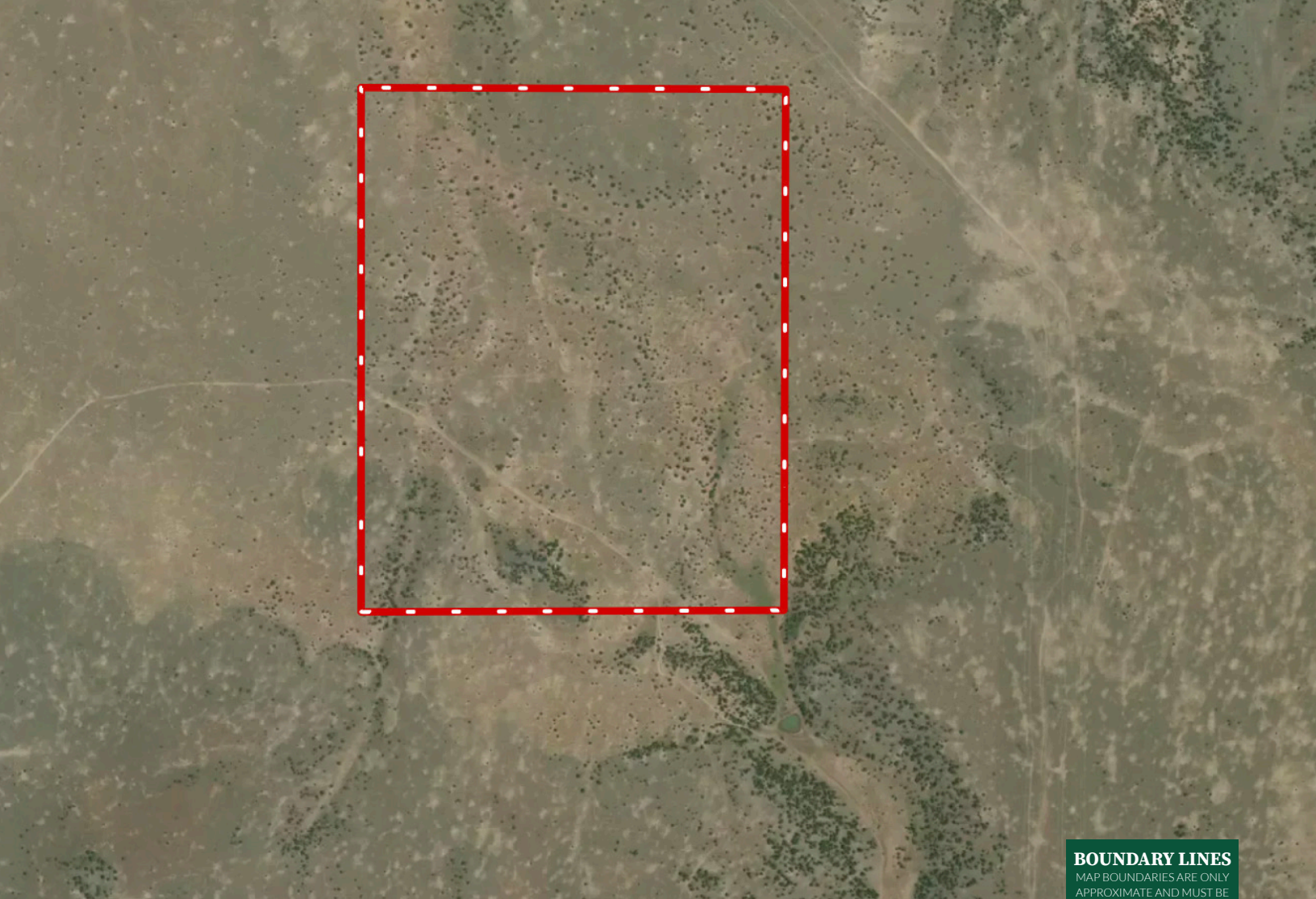
Location

A short 26 Miles from the town of Quemado, NM along US 60 and 22 miles from Springerville, AZ along US 60, both cities have fuel, groceries, motel and other necessities.

A short 2 mile drive on Catron County Road A004 / Powerline Road from US 60 , then a short 4 mile drive along a scenic unimproved road on BLM Property gets you to the East side of the property. The limited access adds to the seclusion value of the property

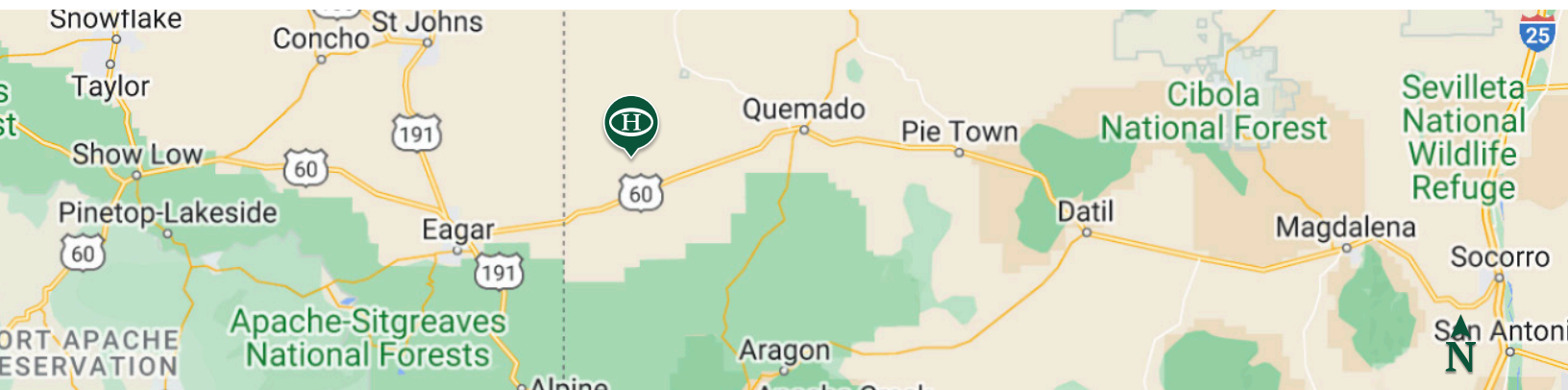
**All information provided is deemed reliable but is not guaranteed and should be independently verified. Hayden Outdoors and its affiliates makes no representation or warranties as to the accuracy, reliability, or completeness of the information, text, property boundaries, graphics links or other items contained in any website, print, or otherwise linked to or from this website. The sale offering is made subject to errors, omissions, change of price, prior sale or withdrawal without notice.*





BOUNDARY LINES
MAP BOUNDARIES ARE ONLY
APPROXIMATE AND MUST BE
VERIFIED FOR ACCURACY.

 Boundary






HAYDEN OUTDOORS.



FARM, RANCH & RECREATIONAL REAL ESTATE



Robert Espinoza Sr.

 Broker Associate, Licensed in NM
 REspinozaSr@HaydenOutdoors.com
 505.486.4921

J. Gregory Liddle

Broker Partner, Licensed in CO & NM 
Greg@HaydenOutdoors.com 
970.946.0374 