

HK Divide & Development Potential

494.00 Acres | Crook County, WY | \$1,935,000



HAYDEN  OUTDOORS.

HK Divide & Development Potential

TOTAL ACRES:

494.00

PRICE:

\$1,935,000

COUNTY:

Crook County

CLOSEST TOWN:

Pine Haven, WY

Activities & Amenities:

Cattle/Ranch
Development Potential
Farm/Crops/Ag
Hiking/Climbing
Hunting - Big Game
Hunting - Predator/Varmint
Hunting - Small Game
Hunting - Turkey
Hunting - Upland Birds
Water View
Wooded
State Hunting Unit: Deer 3.

Land Details:

Address: TBD Gruenhagen Road,
Moorcroft, Wyoming 82721, USA
Closest Town: Pine Haven
Total Acres: 494.00
Deeded Acres: 494.00
Leased Acres: 0.00
Source of lot size: Unknown

About This Property

Discover the natural beauty and possibilities of HK Divide, a 494 +/- acre property in Crook County. Featuring stunning meadows, rugged draws, and panoramic vistas of Keyhole Reservoir and Missouri Buttes, this land offers abundant water resources. With a large lot subdivision filed, HK Divide is ideal for a private ranch retreat or development project, presenting a unique opportunity.

Land

Perched high, HK Divide offers panoramic vistas of Keyhole Reservoir and the surrounding topography. The iconic Missouri Buttes stand majestically in the distance, enhancing the charm and allure of this land.

Water resources are plentiful at HK Divide, with a shared well on the property and four strategically pipelined stock tanks. For those considering development, a large lot subdivision has already been filed with Crook County, opening opportunities for further investment and development.

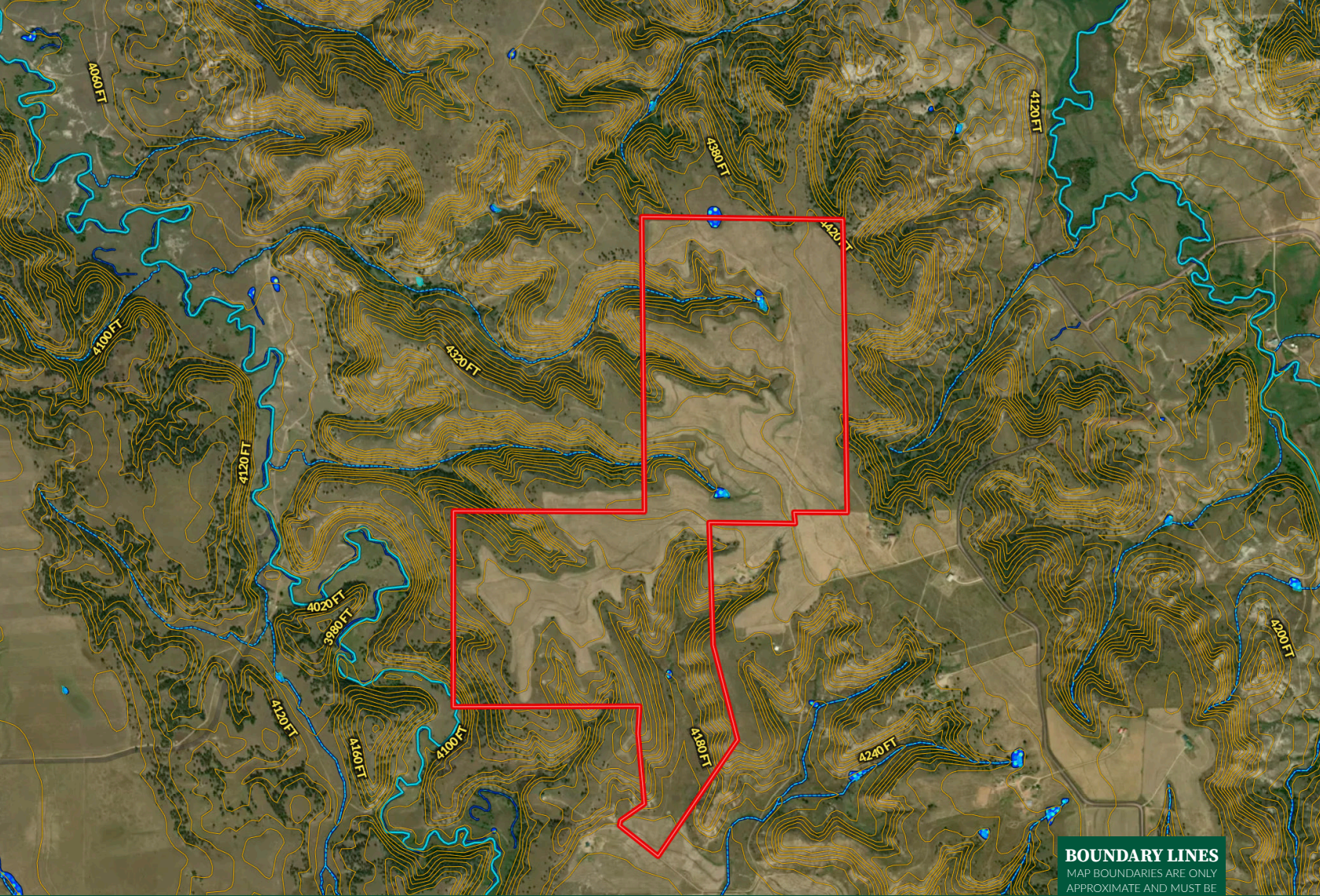
Whether you envision creating a private ranch retreat or a development project, HK Divide provides the perfect canvas. Embrace the chance to own a piece of Wyoming's stunning landscape with this exceptional 494 +/- acre property, where the possibilities are as boundless as the views.

Recreation

Located in Wyoming, Game Unit 3 for Deer & Antelope, and Unit 1 for Turkey. Please check Wyoming Fish and Game regulations for details on tags.







 Boundary

BOUNDARY LINES
 MAP BOUNDARIES ARE ONLY
 APPROXIMATE AND MUST BE
 VERIFIED FOR ACCURACY.






HAYDEN OUTDOORS

FARM, RANCH & RECREATIONAL REAL ESTATE






Taylor Vinot

 Salesperson, Licensed in WY
 TVinot@HaydenOutdoors.com
 307.696.1309



Jenny Tarver

 Salesperson, Licensed in WY
 Jenny@HaydenOutdoors.com
 307.299.7145