

Ramshorn Ranch

148.35 Acres

Albany County, WY

\$785,000



HAYDEN  OUTDOORS[®]

Ramshorn Ranch

TOTAL ACRES:

148.35

PRICE:

\$785,000

COUNTY:

Albany County

CLOSEST TOWN:

Buford, WY

Activities & Amenities:

ATV/Off Road
Cycling/Mountain Biking
Equestrian/Horse Property
Hiking/Climbing
Hunting - Big Game
Hunting - Predator/Varmint
Hunting - Small Game
State Hunting Unit: Elk Hunt Area 6,
Deer Hunt Area 61, Antelope Hunt
Area 37, Moose Hunt Area 45

Land Details:

Land Details
Address: 94 Ramshorn Road,
Buford, Wyoming 82052, USA
Closest Town: Laramie
Total Acres: 148.35
Deeded Acres: 148.35
Estimated Taxes: \$2,178.66 - 2023
Source of lot size: Assessor/Tax Data

Building Details:

Other Improvements: Loafing Shed
Fence Type: Wire

Property Summary

Located halfway between Laramie and Cheyenne Wyoming, tucked out of the way and at the end of the road, sits the Ramshorn Ranch! The land is a rare find of its size and location and is nestled into a setting that is rich in history and full of opportunities! Take in the never-ending views and stunning sunsets from the secluded location at the southern end of the Laramie Mountain Range!

Land

The high-country terrain consists of rolling hills, long draws, and impressive rock outcroppings that all combine to make up the varied landscape on this hidden gem! Elk, Deer and Antelope, along with a host of other Wyoming Critters roam the neighborhood at their leisure and call the area home!

Recreation

As well as the wildlife and recreation opportunities on the Ranch, Vedauwo and the Medicine Bow National Forest sit in close proximity, along with Curt Gowdy State Park. The Snowy Mountain Range is under an hour to the west with all offering endless summer and winter activities in an around the area!



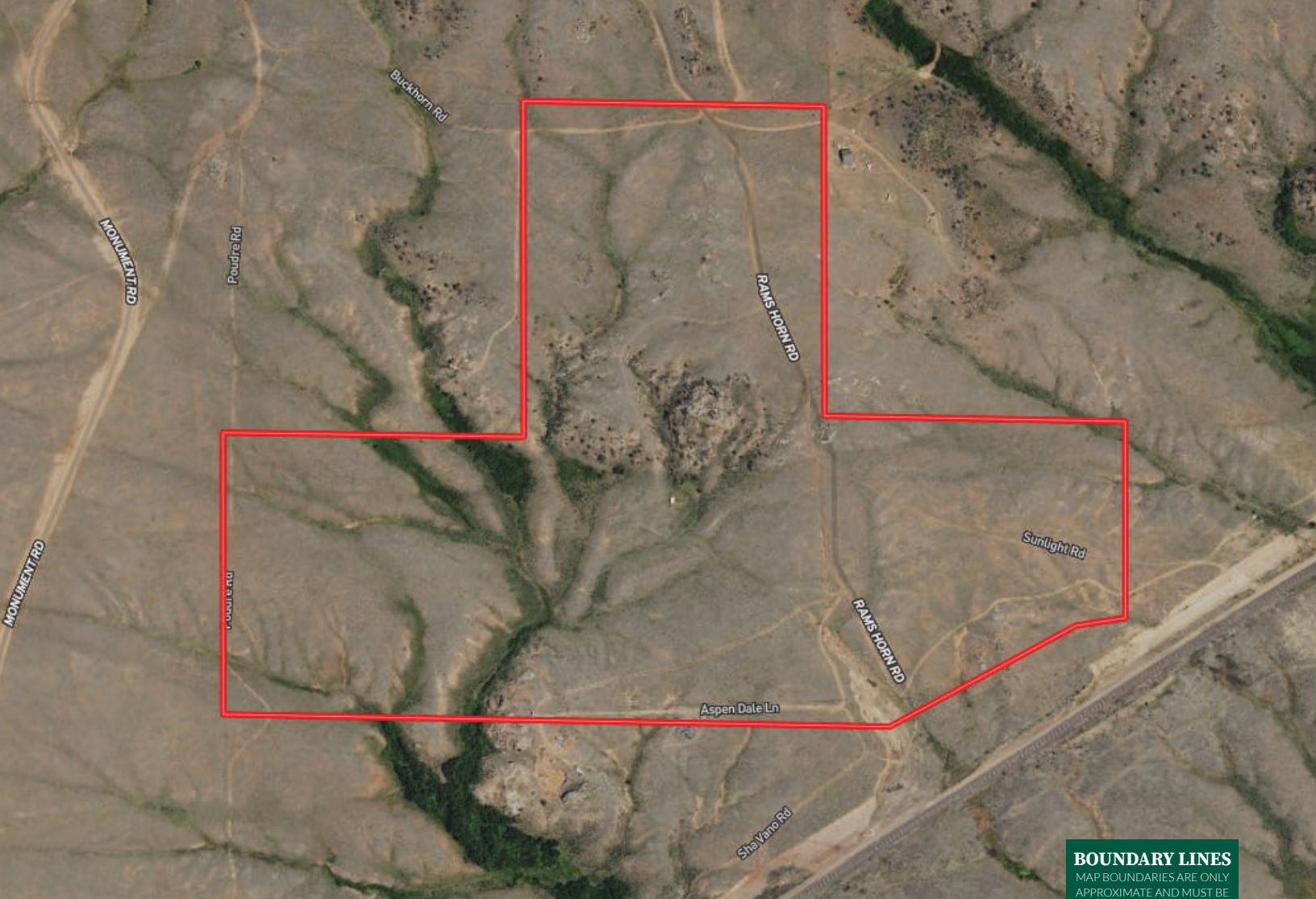


Location

The Ranch is conveniently located in the “Golden Triangle” of Laramie and the University of Wyoming, Cheyenne and the Wyoming State Capitol, and Ft Collins with the hustle and bustle of the busy Colorado front range. The Ramshorn Ranch offers an exceptional opportunity to own a piece of the vanishing last frontier in the Great State of Wyoming!

**All information provided is deemed reliable but is not guaranteed and should be independently verified. Hayden Outdoors and its affiliates makes no representation or warranties as to the accuracy, reliability, or completeness of the information, text, property boundaries, graphics links or other items contained in any website, print, or otherwise linked to or from this website. The sale offering is made subject to errors, omissions, change of price, prior sale or withdrawal without notice.*







 Boundary

BOUNDARY LINES
MAP BOUNDARIES ARE ONLY
APPROXIMATE AND MUST BE
VERIFIED FOR ACCURACY.



Matt Munford

-  Licensed in NE & WY
-  MattMunford@HaydenOutdoors.com
-  307.640.3756

