

Panoramic Views over Santa Fe

3.50 Acres

Rio Arriba County, NM

\$575,000



HAYDEN  OUTDOORS.

Panoramic Views over Santa Fe

TOTAL ACRES:

3.50

PRICE:

\$575,000

COUNTY:

Rio Arriba County

CLOSEST TOWN:

Santa Fe, NM

Activities & Amenities:

Timber
Wooded

Land Details

Address: 2351 Via Colibris, Santa Fe, New Mexico 87501, USA
Closest Town: Santa Fe, NM
Total Acres: 3.50

Property Summary

Looking for the best views in Santa Fe? Located in the beautiful Hyde Park Estates III neighborhood, this wooded 3.5 acre lot offers gorgeous, elevated views of the Jemez, Sandias, and Rio Grande Valley and yet is only 10 minutes from the Plaza and less than 20 minutes to Santa Fe Ski Area.

Land

Located at the end of a private, paved road, this 3.5 acre lot features heavy tree cover, a wealth of views, and space to breathe while maintaining the convenience of city life. Located just off of Hyde Park Road, it sits directly across from Ten Thousand Waves Spa in the sparsely populated Hyde Park Estates III neighborhood which features large lots and custom homes. Underground utilities and electricity are available at the road and a staked building envelope already exists, so the buyer faces one less set of hurdles on the way to their dream home!

Recreation

Located less than 20 minutes from the Santa Fe Ski Area, 15 minutes from the Dale Ball Hiking and Biking Trailhead and 10 minutes from the shopping and dining of the Plaza, this lot offers convenient access to all that Santa Fe has to offer. With its location at the base of the Sangre de Cristo mountains and high desert climate offering 300+ days of sun each year, Santa Fe is one of the few places where locals and visitors can boast about accomplishing all three on the same day!

Location

This property is located approximately 25 minutes from the Santa Fe Airport, which offers both commercial and private airline travel. Santa Fe offers all that a modern city should, with the favorable weather, historic charm, and culture that has earned it a place on numerous "Best Places to Live" ranking sites.

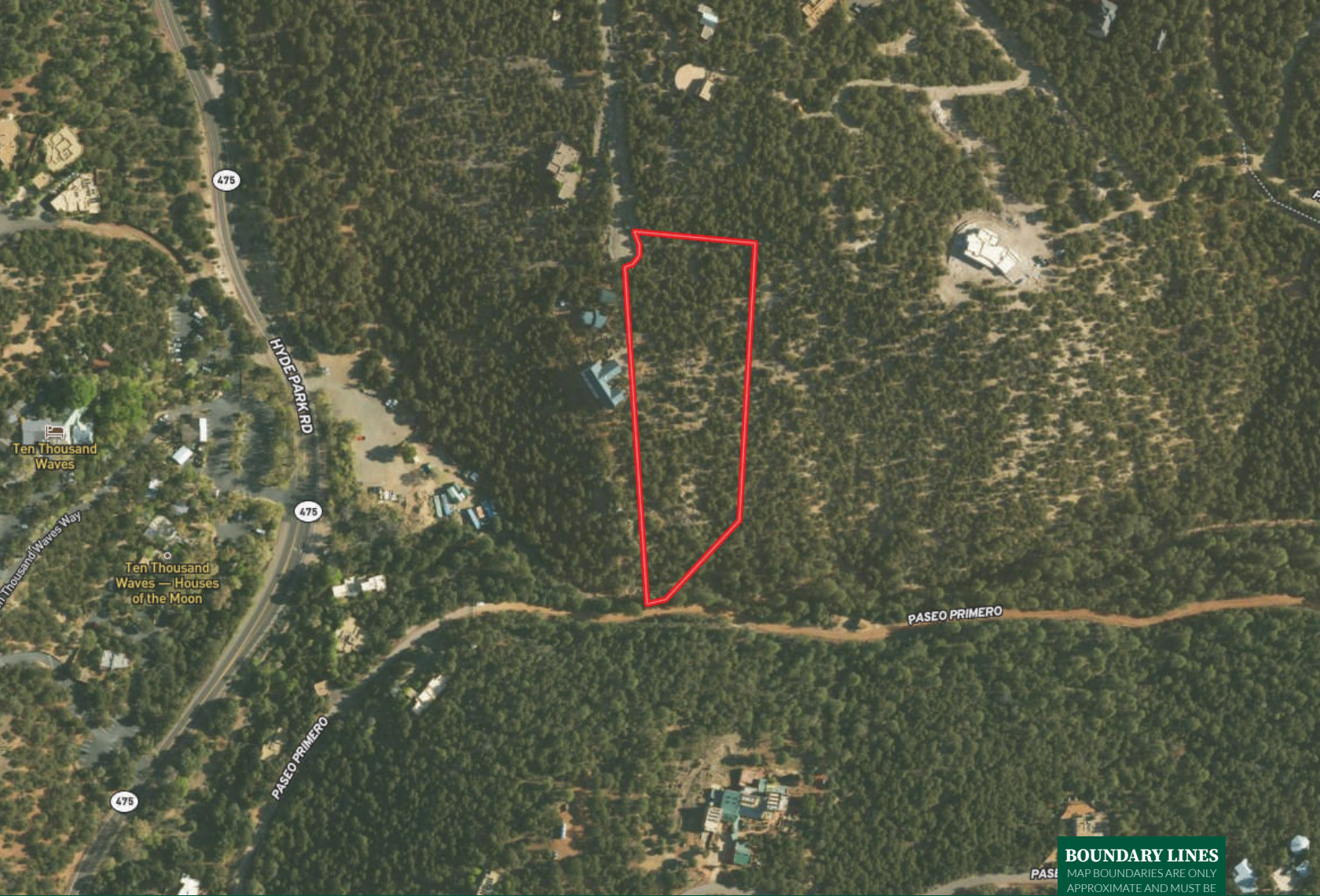


*All information provided is deemed reliable but is not guaranteed and should be independently verified. Hayden Outdoors and its affiliates makes no representation or warranties as to the accuracy, reliability, or completeness of the information, text, property boundaries, graphics links or other items contained in any website, print, or otherwise linked to or from this website. The sale offering is made subject to errors, omissions, change of price, prior sale or withdrawal without notice.



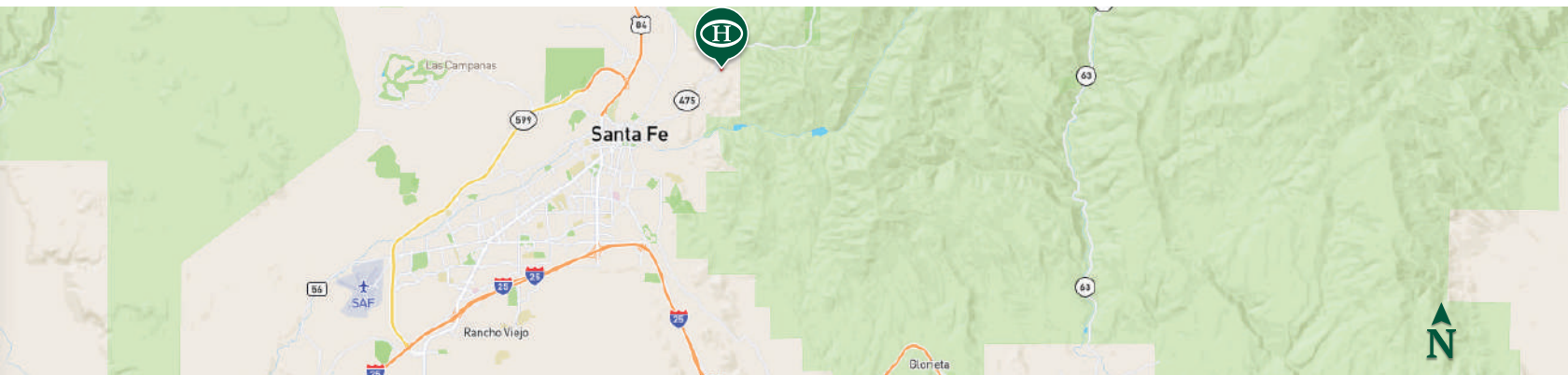
Boundaries are
approximate





BOUNDARY LINES
MAP BOUNDARIES ARE ONLY APPROXIMATE AND MUST BE VERIFIED FOR ACCURACY.

 Boundary



HAYDEN OUTDOORS.

FARM, RANCH & RECREATIONAL REAL ESTATE



Chris Fichtl

📍 Sales Associate,
Licensed in FL, NM & NE
✉ ChrisF@HaydenOutdoors.com
📞 850.737.8248



Lauren Fichtl

📍 Broker Associate,
Licensed in NM, CO & FL
✉ Lauren@HaydenOutdoors.com
📞 850.797.5417