

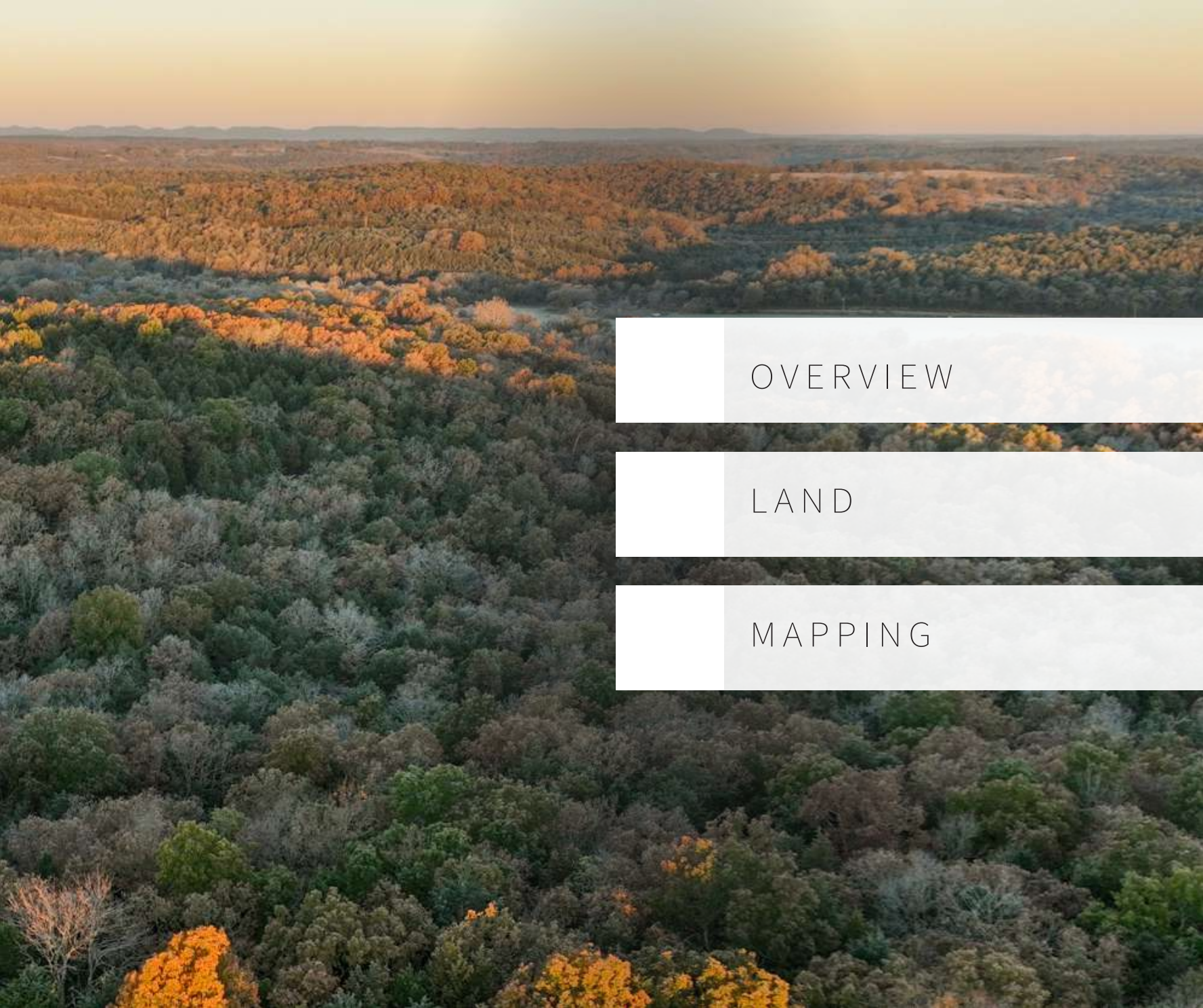
BARREN FORK RANCH

2,550.00 ACRES | OZARK COUNTY, MISSOURI





**HAYDEN
OUTDOORS™
REAL ESTATE**



OVERVIEW

LAND

MAPPING

OVERVIEW





QUICK FACTS

2,500.00 Acres

Farm

Hunting

Ranch

Recreational

Timberland

Vacant Land

Waterfront

WELCOME TO BARREN FORK RANCH

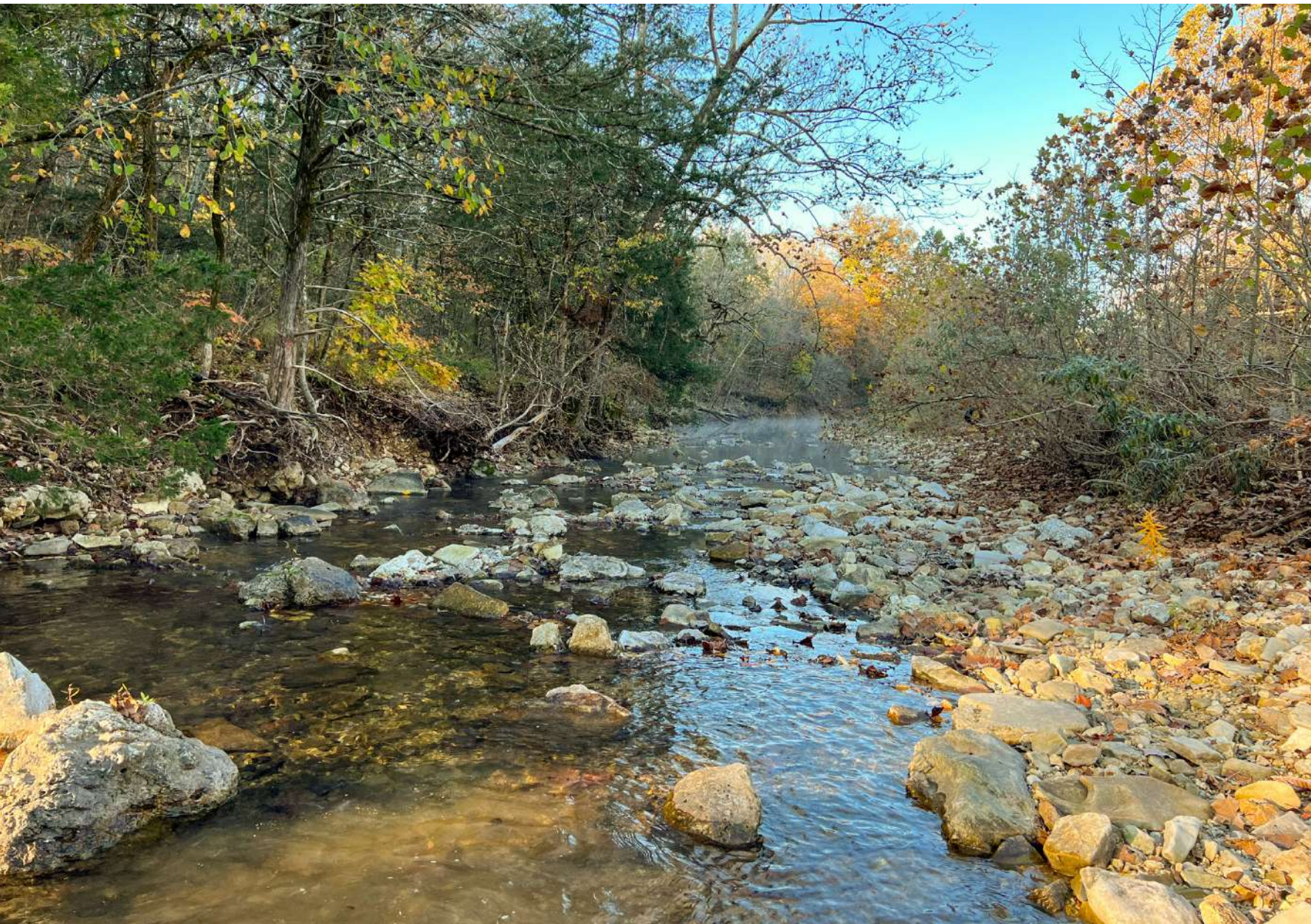
The Barren Fork Ranch is one of the largest offerings and finest ranches for sale in the entire state of Missouri. Spanning 2550+/- acres, this remarkable property boasts 1/2 mile of Barren Fork frontage, bottom hay fields, live water springs, large blocks of timber and big rolling ridges.

LAND



Situated in the heart of the Ozark Mountains, the Barren Fork Ranch is one of the absolute finest offerings in the state. With its numerous livestock options as well as unmatched recreational opportunities, this ranch is truly in a league of its own. Located less than 10 miles from Gainesville and only 12 miles to beautiful Bull Shoals Lake, the ranch offers incredible privacy and seclusion. The framework is in place with 16 different fields







spanning just shy of 300 acres that can be utilized to put up hay, graze livestock, or be developed into food plots. One of the key features of the property is the abundant sources of live water. Barren Fork is a sizable creek that runs through approximately 1/2 mile of the property as well as numerous live springs that flow throughout the ranch. Several ponds are scattered throughout the Barren Fork Ranch giving multiple water opportunities. With numerous big timbered ridges and pinch points, this property is truly a sportsmans paradise. Large transmission powerlines run through the property giving ideal scenarios to see long distances when hunting deer in the rut or for someone looking for long range shooting opportunities. The property has a large population of white tailed deer and Eastern wild turkeys and has no shortage of trophy quality bucks. There is also multiple barns, an outbuilding, electric, and a well onsite.









FEATURES

ATV/Off Road

Cattle/Ranch

Farm/Crops/Ag

Food Plots

Hiking/Climbing

Hunting - Big Game

Hunting - Predator/Varmint

Hunting - Small Game

Hunting - Turkey

Natural Spring

Outbuilding/Barn/Shed/Shop

Pond/Lake

Stream/River

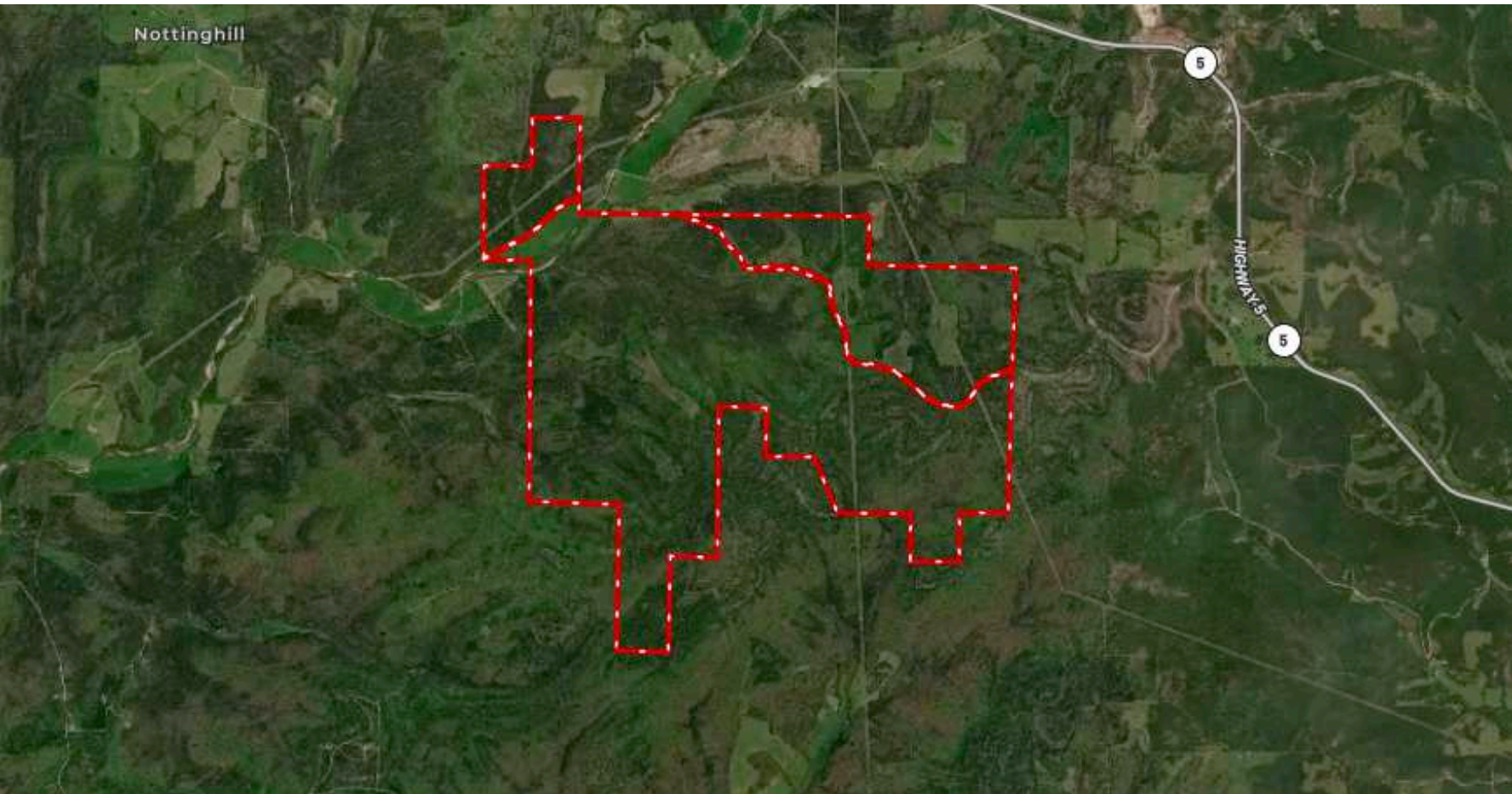
Timber

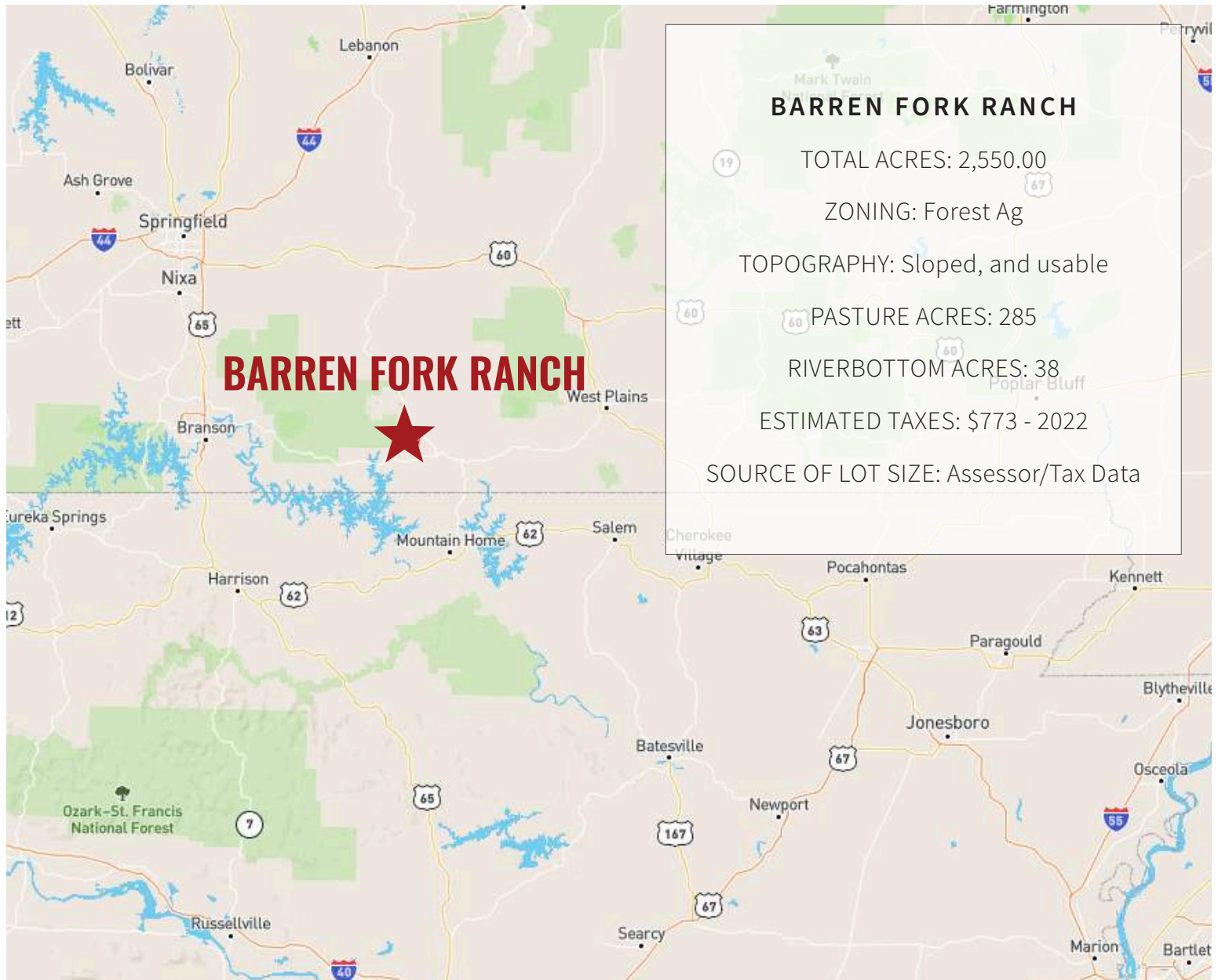
Water Access

Waterfront

Wooded

MAPPING







**HAYDEN
OUTDOORS™
REAL ESTATE**

Exclusively Presented By:

JEFF LOVAN

Licensed in AR, IA, KS & MO

(417) 252-1463 | JeffLovan@HaydenOutdoors.com

SCOTT FOSTER

Licensed in MO

(417) 331-1364 | ScottFoster@HaydenOutdoors.com

www.HaydenOutdoors.com